

EAST MAMPRUSI MUNICIPAL ASSEMBLY



ANNUAL ACTION PLAN FOR 2026

UNDER THE THEME: “RESETTING GHANA AGENDA:
CREATING JOBS, ENSURING ACCOUNTABILITY, AND
PROMOTING SHARED PROSPERITY”

PREPARED BY THE PLAN PREPARATION TEAM
FACILITATED BY THE PLANNING UNIT

OCTOBER, 2025

Table of Contents

LIST OF ACRONYMS.....	iv
EXECUTIVE SUMMARY.....	viii
CHAPTER ONE.....	1
BRIEF MUNICIPAL PROFILE.....	1
1.1 Background.....	1
1.2 Location and Size.....	1
1.3 Relief and Drainage.....	2
1.4 Climate.....	3
1.5 Soil and Vegetation.....	3
1.6 Natural Environment.....	4
1.7 Built Environment.....	4
1.8 Land Tenure.....	4
1.9 Geology and Minerals.....	4
1.10 Chieftaincy.....	6
1.11 Languages, Culture and Ethnicity.....	6
1.12 Demographic Characteristics.....	7
1.13 Migration Trends.....	3
1.14 Culture.....	3
1.15 Implication of Demographic Characteristics for Development.....	3
1.16 Composition of the Municipal Assembly.....	4
1.17 Health and Nutrition.....	5
1.18 Education.....	5
1.19 Water and Sanitation.....	7
1.19.1 Water Supply.....	7
1.20 Municipal / Micro Economy.....	8
1.21 Occupation.....	9
1.22 Agriculture.....	10
1.23 Climate Change and Vulnerability Analysis.....	10
1.24 Gender Profile and Analysis.....	12
1.25 Socio-Economic Infrastructure.....	12
1.26.1 Road Network and Condition.....	12
1.25.2 Energy.....	14
CHAPTER TWO.....	23
COMPOSITE ACTION PLAN FOR 2026.....	23

LIST OF ACRONYMS

AAP	Annual Action Plan
ADPO	Assistant Municipal Planning Officer
NIB	National Investigative Bureau
CAMFED	Campaign for Female Education Development
CAP	Community Action Plan
CBO	Community Based Organization
CC-DRR	Climate Change and Disaster Risk Reduction
CHPS	Community Health Planning and Services
CWSA	Community Water and Sanitation Agency
MA	Municipal Assembly
DACF	Municipal Assembly Common Fund
DBA	Municipal Budget Analyst
DCD	Municipal Co-ordinating Director
DDMC	Municipal Disaster Management Committee
MEHO	Municipal Environmental Health Officer
MFO	Municipal Finance Officer.
DMTDP	Municipal Medium Term Development Plan.
DPCU	Municipal Planning Coordinating Unit
MPO	Municipal Planning Officer
DPOs	Disabled People's Organizations
DRR	Disaster Risk Reduction
DWAP	Municipal wide Assistance Project
DWE	Municipal Works Engineer
EMMA	East Mamprusi Municipal Assembly
EPA	Environmental Protection Agency
GDO	Gender Desk Officer
GETFund	Ghana Education Trust Fund
GES	Ghana Education Service
GHS	Ghana Health Service

GoG	Government of Ghana
IGF	Internally Generated Fund
LGSS	Local Government Service Secretariat
MOFA	Ministry of Food and Agriculture
MOH	Ministry of Health
MOWAC	Ministry of Women and Children Affairs
MTDP	Medium Term Development Plan
NADMO	National Disaster Management Organization
NEDCo	Northern Electricity Distribution Company
NGOs	Non-Governmental Organization
PARED	Partners in Rural Empowerment and Development
PAS-L	Presbyterian Agricultural Station- Langbinsi
POCC	Potentials, Opportunities, Constraints and Challenges
PWDs	People with Disabilities
T & CPD	Town & Country Planning Department.
UNICEF	United Nations Children Fund
USAID	United States Agency for International Development
VRA	Volta River Authority

LIST OF TABLES

Table 1: Distribution of the Projected Population.....	i
Table 2: Health Facilities and their Locations in the Municipality.....	5
Table 3: Teachers ratio to students in East Mamprusi Municipal.....	6
Table 4: Access to Water, Sanitation, and Hygiene Services.....	8
Table 5: Engineered Feeder Roads.....	13
Table 6: Partially Engineered Feeder Roads.....	13
Table 7: Non-Engineered Feeder Roads.....	14
Table 8 : Communities with Electricity in the Municipal.....	15
Table 9: List of Communities without Electricity in the Municipal.....	16
Table 10 : Summary of Key Development Problems / Issues / Gaps Identified.....	22
Table 11: ANNUAL ACTION PLAN 2026.....	24

ACKNOWLEDGEMENT

The preparation of this plan would not have been possible without the commitment and dedication of certain individuals, organizations and other stakeholders. On behalf of EMMA and on my own behalf as the Municipal Chief Executive, I would like to sincerely thank all those who made invaluable contributions to the plan preparation process.

First, EMDA thanks the entire MPCU for facilitating the plan preparation process, even in the face of severe resource constraints. The immense and diverse contributions of the MPCU members are deeply appreciated.

Secondly, I appreciate the enthusiasm, commitment and effort of the core plan preparation team led by the Municipal Development Planning Officer, and his assistants, in ensuring the completion of the Action Plan.

Thirdly, may the Good Lord bless abundantly, all Town and Area Council members, staff of Sector Departments, Development Partners Traditional Authorities, Assembly men and women, and other individuals whose names are not mentioned, for the provision of data and their active participation in the plan preparation processes. It is my fervent hope and prayer that the zeal, vigour and enthusiasm expressed by stakeholders during the preparation of the Plan will be readily exhibited during its implementation.

.....
HONOURABLE DAVID BARICHE

EXECUTIVE SUMMARY

The Ghana Government's policy on decentralisation as specified in the fourth Republican Constitution of 1992, the Civil Service Law 1993, (PNDC law 327) the Local Government Act 1993, (Act 462), the Local Governance Act 2016, (Act 936), the National Development Planning Commission Act 1994 (Act 479), the National Development Planning System Act 1994 (Act 480), Local Government (Urban, Zonal, Town Council and Unit Committees Establishment Instrument 1994 (LI 1589), has given the MMDAs some measure of autonomy to exercise administrative, political and planning functions over issues relating to development of their constituents. Thus, some level of authority to formulate policies, develop plans and execute programmes and projects for the development of their localities have been delegated to the MMDAs. It is against this backdrop that MMDAs have been mandated to prepare a Four-Year Medium Term Development Plan (MTDP) spanning 2022 to 2025 under the Agenda for Jobs creating Opportunities for All Policy Framework out of which Annual Action Plans are curved out.

Substantial progress has been made towards the execution of programmes and projects geared towards solving the socio-economic needs of the people in the municipal over the years. Nevertheless, not all the programmes and projects planned were executed during these periods. This gap has resulted due to certain difficulties encountered by the Assembly. Among these difficulties / challenges include:

- Inadequate / irregular flow of funds
- Weak capacity to monitor the implementation of programmes / projects and utilizing the feedback therein.
- Poor performance of some contractors.
- Weak capacity to mobilise Internally Generated Funds (IGF) for project implementation.
- Dwindling donor support to the municipal.
- Implementation of programmes and projects outside the plans.

The current 2026 Annual Action Plan has been prepared based on the National Medium – Term Development Policy Framework (2026 - 2029), otherwise known as the Consolidated

Programme of Economic and Social Development Policies under the theme, “Resetting Ghana Agenda: Creating Jobs, Ensuring Accountability, And Promoting Shared Prosperity”

Financing the 2026 Annual Action plan for East Mamprusi will depend on funds from DDF, DACF, GSCSP, GPSNP, SOCO, SCP, other Governmental Support/Fund, Donor funds and Development Partners.

It is hoped that the committed and effective implementation of the plan back by a strong political leadership will contribute immensely to reduce poverty and transform the lives of the people in the East Mamprusi Municipal.

CHAPTER ONE

BRIEF MUNICIPAL PROFILE

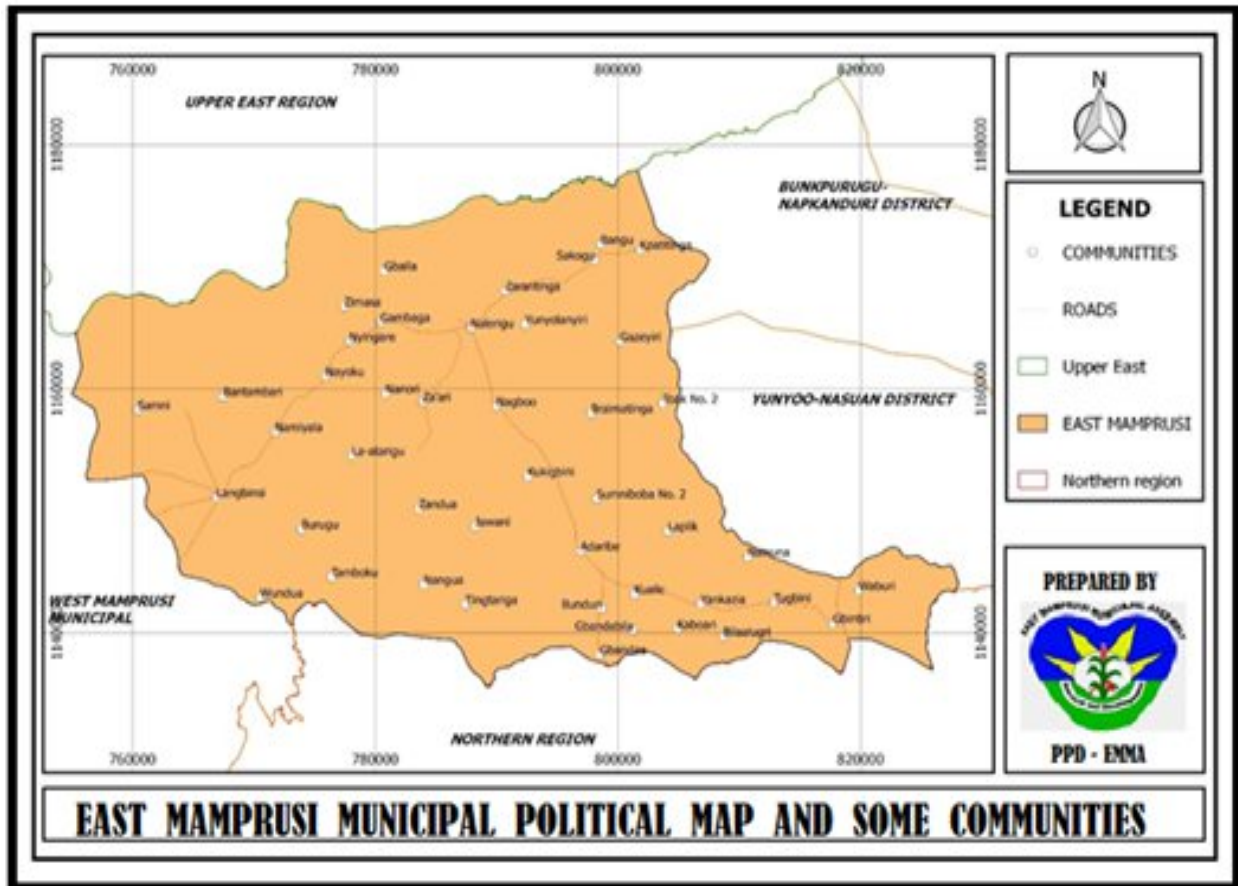
1.1 Background

The East Mamprusi Municipal is one of the 28 administrative MMDAs in the region. It was established under PNDC Law 207 in 1988 by a Legislative Instrument (LI. 1456) with the capital at Gambaga. Gambaga is a historic town lying next to the seat of the Nayiri, King of Mamprugu, and also the first headquarters of the Northern Territories. It is one of the oldest municipals in Northern Region. Out of it, the West Mamprusi Municipal was carved in 1988. In 2004, the Bunkpurugu-Yunyoo Municipal was also created to promote developments. The creation of the Bunkpurugu-Yunyoo Municipal resulted in the change of the LI to (LI.1776). It was elevated to Municipal status in 2018 by a Legislative Instrument (LI.2274). It therefore serves as the parent Municipal for West Mamprusi, Mamprugu Moagduri, Bunkpurugu and Yunyoo-Nasuan Municipals

1.2 Location and Size

The East Mamprusi Municipal is located in the north-eastern part of the Northern Region. The municipal shares boundaries with Talensi, Nabdam, Bawku West and Garu-Tempane Municipals, all in the Upper East Region to the North, Bunkpurugu – Yunyoo Municipal to the East, Gushiegu and Karaga Municipals to the South and West Mamprusi Municipal to the West. It covers a land mass of 1,660sqkm, representing about 2.2% of the total land mass of the region.

Figure 1: EAST MAMPRUSI MUNICIPAL MAP



Source: East Mamprusi Municipal Assembly, 2025.

1.3 Relief and Drainage

The land is generally gently undulating and the Gambaga escarpment marking the Northern limit of the Voltain Sandstone basin. Apart from the mountainous areas bordering the escarpment there is little runoff when it rains. There are different types of rock formation given the different relief features, which range from flat bottom valleys to steep-sided highlands. The upper half of the Municipal is underlined by the middle Voltain formation consisting of shale, mudstone, iron pans and sandstone.

The Municipal has very good water drainage basin. The White Volta, which enters the region in the northeast is joined by the Red Volta near Gambaga, the Nawong and Moba rivers are major perennial rivers in the Municipal.

1.4 Climate

The Municipal lies in the tropical continental western margin and characterized by a single rainfall pattern brought in by the rain bearing tropical maritime air mass (MT). This occurs around April to October every year. This is followed by the tropical continental air mass (CT) which brings about the dry season which occurs from late November to March. The mean annual rainfall is between 1000mm to 1500mm with the peak occurring from July to September. The municipal experiences a prolonged dry season with the peak occurring between March and April. Temperature is fairly high with the annual mean temperature ranging from 27.4°C to 35°C depending on the season. The highest temperature is recorded in the dry season while the lowest is experienced during the Harmattan season.

1.5 Soil and Vegetation

There are two major soil types in the Municipal. These are the Savannah Ochrosols and Ground water Laterites. The Savannah Ochrosols which covers almost the entire Municipal, is moderately drained and the upland soils developed mainly on Voltain sandstone. The texture of the surface soil is sandy to sandy loam with fairly good water retention.

The Groundwater Literate covers a smaller portion of the Municipal and is mainly found in the southern part of the Municipal. These are concretionary soils developed mainly from Voltain shale, mudstone and argillaceous sandstone materials. The texture of the soil is sandy loam which is suitable for the cultivation of annual food crops such as maize, millet, sorghum, water melon etc. and tree crops with long gestation period such as shea nut, dawadawa, cashew etc which are of economic importance.

The Municipal lie within the interior woodland savannah belt and has Common grass vegetation with trees like dawadawa, baobab, Shea nut trees, etc. Grasses grow in tussocks and can reach a height of 3 metres or more. There is marked change in the vegetation depending on the two prevailing climatic condition. During the raining season animals graze on the grasses. The Shea nut tree is of great economic value for women who pick the nuts and process it into Shea butter.

1.6 Natural Environment

The natural vegetation in most parts of the Municipal especially around settlements has seriously been altered due to over cultivation, overgrazing by animals, over exploitation for fuel wood without replacement. Farming (crop and livestock) is the mainstay of the people. Crop cultivation being mainly on off-compound (bush) farms with an average of 0.5 hectares per farm holding. The major land degradation issues are cutting of trees for firewood, charcoal burning and chain saw operation.

1.7 Built Environment

There are three urban settlements with population of 5,000 and above. They are Nalerigu, Gambaga, and Langbinsi. The people in these urban settlements constitute about 30% of the total population of the Municipal population. Seventy percent of the people are thus rural dwellers. Since all the major social and economic infrastructure and services are located in the urban areas, majority of the people are either deprived totally of utilizing these facilities or have limited access to them.

Other settlements that follow are Gbintiri, Nagbo, and Sakogu. Socio-economic infrastructure and services are concentrated in the Northern half of the Municipal. Settlement in the South and Central parts do not have easy access to these facilities. Settlement patterns are largely dispersed. This is more so with the rural communities. A number of compounds made up of usually round huts roofed with thatch and owned by a number of households are scattered over large farmlands. This pattern in the rural areas sometimes poses a problem of distinguishing one community from another in some cases.

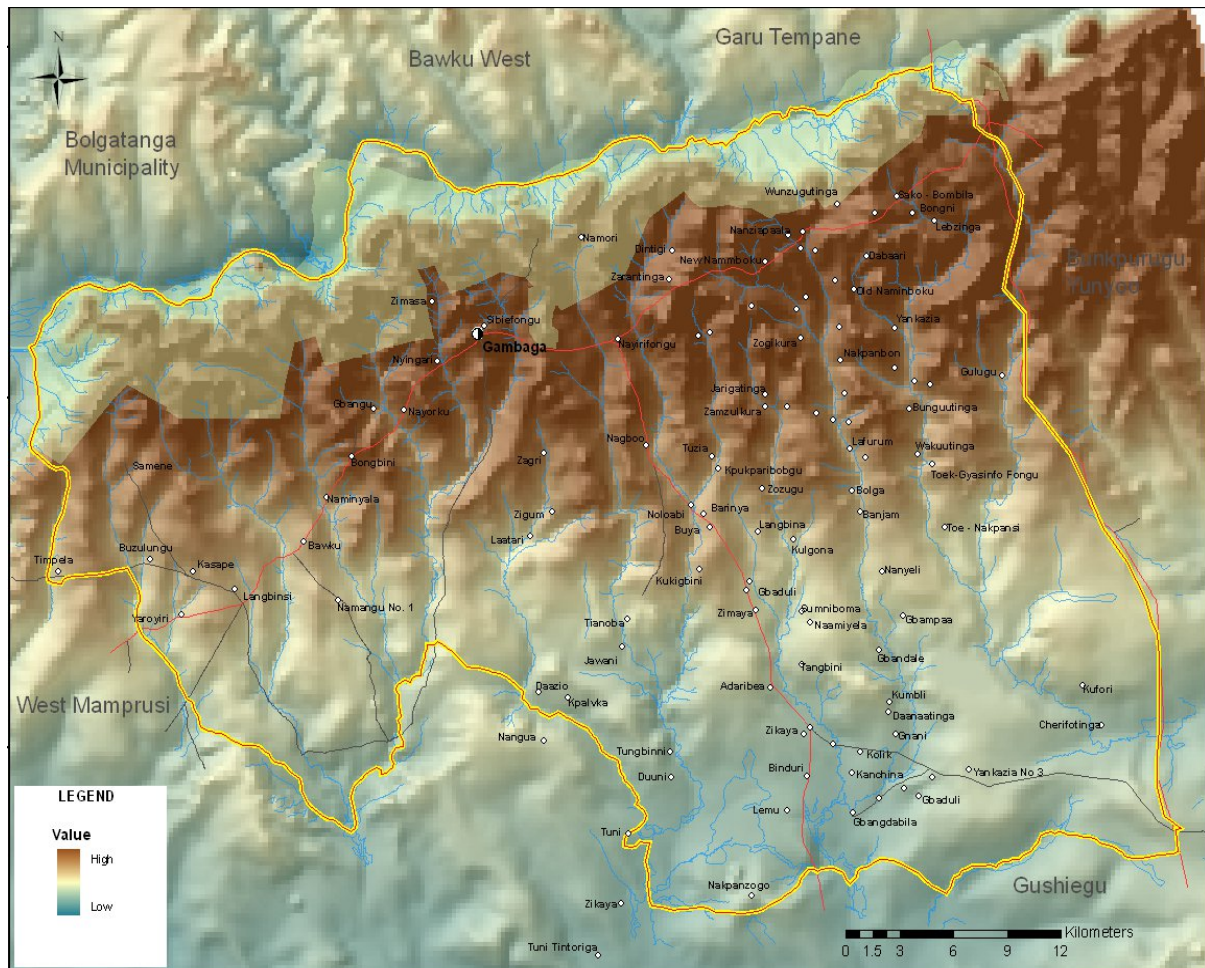
1.8 Land Tenure

Chiefs and family heads own land in the Municipality. An individual or a group of people can acquire a piece of land for construction or farming purpose.

1.9 Geology and Minerals

There are Gold deposits on the Gambaga escarpment's stretch. Also clinker is found around Gbintiri and Langbinsi areas.

Figure 2: Geological Map of East Mamprusi Municipal



Source: East Mamprusi Municipal Assembly, 2025.

1.10 Chieftaincy

The Nayiri is the King or overlord of Mamprugu traditional area and has council of elders who advise him. The Nayiri is supported by paramount chiefs, Divisional and other sub-chiefs under him in the kingship of Mamprugu. His paramountcies extend beyond the boundaries of the Municipal and are located in other Regions and Municipals. Notable of mention are the Wulugu Naaba, Wungu Naaba, Soo Naaba, Kulgu Naaba etc (all in the West Mamprusi Municipal); Yunyoorana and Bunkpurugu Naaba (in the Bunkpurugu Yunyoo Municipal) and Zuarungu Naaba, Tongu Naaba, Sakuti etc (all in Upper East Region).

1.11 Languages, Culture and Ethnicity

Mamprusis are the major ethnic group in the municipal. However, there are also Bimobas, Konkombas, Talensis, Moshis, Chokosis and Hausas who have settled at the eastern part of the

municipal. The people of East Mamprusi Municipal celebrate a number of festivals. This include Damba festival, Bugum (fire) festival and others. The municipal is a multi-religious one. The dominant religions are Islam (59.1%), Christianity (22.2%) and Traditional worshipping (16%).

1.12 Demographic Characteristics

The demographic characterization entails an analysis of the population and its attributes, including size and growth rate, age–sex distribution, household composition, and spatial distribution.

2.2.1 Population Characteristics

2.2.1.1 Size and Growth Rate

The population of East Mamprusi Municipality as of 2021 was 188,006 (Ghana Statistical Service, 2021). The population simply had within the period of 11 years increased by 66,997 from the 2010 population of 121,009. This implies that population growth rate is 4% per annum. Of this population, 57% resides in the rural areas of the Municipality with the remaining 43% residing in the urban communities. The largest of these urban communities are Nalerigu, Gambaga, Langbinsi, Gbintiri, Nagbo and Sakogu. At the end of 2024, the population of the Municipality was projected at **211,976** in totality, comprising 48.5% males and 51.5% females. The population of the Municipality is expected to increase to 291,918 by 2029, assuming the growth rate (of 4% per annum) will not change significantly within this period.

Table 1: Distribution of the Projected Population

Age Group	Base Population	2026			2027			2028			2029		
		Male	Female	Total	Male	Female	Total	Male	Female	Total	Male	Female	Total
0 - 4	31333	18,480	19,622	38,102	19,207	20,397	39,604	19,950	21,182	41,132	20,711	21,984	42,695
5 - 9	31333	18,480	19,622	38,102	19,207	20,397	39,604	19,950	21,182	41,132	20,711	21,984	42,695
10 - 14	21999	12,985	13,776	26,761	13,515	14,342	27,857	14,068	14,918	28,986	14,646	15,511	30,157
15 - 19	21999	12,985	13,776	26,761	13,515	14,342	27,857	14,068	14,918	28,986	14,646	15,511	30,157
20 - 24	16321	9,634	10,215	19,849	10,022	10,629	20,651	10,424	11,054	21,478	10,841	11,494	22,335
25 - 29	16321	9,634	10,215	19,849	10,022	10,629	20,651	10,424	11,054	21,478	10,841	11,494	22,335
30 - 34	10470	6,169	6,561	12,730	6,421	6,831	13,252	6,681	7,106	13,787	6,949	7,391	14,340
35 - 39	10470	6,169	6,561	12,730	6,421	6,831	13,252	6,681	7,106	13,787	6,949	7,391	14,340
40 - 44	6035	3,558	3,779	7,337	3,703	3,931	7,634	3,853	4,086	7,939	4,010	4,250	8,260
45 - 49	6035	3,558	3,779	7,337	3,703	3,931	7,634	3,853	4,086	7,939	4,010	4,250	8,260
50 - 54	3155	1,855	1,997	3,852	1,930	2,079	4,009	2,007	2,163	4,170	2,086	2,250	4,336
55 - 59	3155	1,855	1,997	3,852	1,930	2,079	4,009	2,007	2,163	4,170	2,086	2,250	4,336
60 - 64	2033	1,196	1,237	2,433	1,244	1,286	2,530	1,293	1,337	2,630	1,343	1,388	2,731
65 - 69	2033	1,196	1,237	2,433	1,244	1,286	2,530	1,293	1,337	2,630	1,343	1,388	2,731
70 - 74	1572	922	1,051	1,973	959	1,093	2,052	997	1,136	2,133	1,037	1,180	2,217
75 - 79	1572	922	1,051	1,973	959	1,093	2,052	997	1,136	2,133	1,037	1,180	2,217
80+	2173	1,548	1,669	3,217	1,609	1,735	3,344	1,670	1,801	3,471	1,733	1,868	3,601
				229,291			238,522			247,981			257,743

1.13 Migration Trends

Out-migration by girls in particular is very prevalent in the Municipal. They move out of the Municipal largely to Kumasi and Accra for Kayaye (head portage). The girls end up by being abused sexually leading to teenage pregnancy, sexually transmitted diseases etc.

1.14 Culture

There are three main ethnic groups in the Municipal and these are the Mamprusis, Konkombas and Bimobas. Smaller groups like the Moshis, Tamplimas, Frafras, Gurushis, Bissas (Busangas) and Fulani. In some Communities, Chiefs see to the traditional administration and local political issues in their communities.

The family is the microcosm of the people of the municipal where compound life incorporates many family members. Members of the family play a critical role in transmitting to the child the culture based moral values and beliefs of the family, and community. Polygamous marriages are pronounced in the Municipal.

Among some ethnic groups in the Municipal a mother was betrothed to her potential husband at tender age. Betrothal of girls by their parents before birth was a common practice.

The Mamprusis in the Municipal celebrate the Damba and Fire festivals. Muslims among the Mamprusis celebrate the Eid festivals. Mamprusis who are Christians, Konkombas and Bimobas celebrate Christmas festival.

1.15 Implication of Demographic Characteristics for Development

The annual growth rate of the population has serious implication for development.

- The large population and high growth rate will assist in providing labour force for farmers in the Municipal since farming is mostly labour intensive in the Municipal.
- The large population size coupled with the growth size can result in a pressure over arable land resulting in ethnic conflicts.
- The structure of the population of the Municipal reveals that of a growing population which could exert pressure on infrastructure in the Municipal such as roads, schools, health care delivery, energy, and housing facilities.

- More than half of the population are female which suggests that development interventions need to be all embracing that take care of the needs of women who constitute the larger segments of the society just like men in order that no imbalances are created in the development process.
- The out-migration by girls if intensified will affect their education, health, resulting in vices and in the final analysis keep women in perpetual poverty.
- The ethnic diversity of the Municipal if not well managed can lead to conflicts.

1.16 Composition of the Municipal Assembly

The Municipal Assembly is made up of the following:

- i. The Municipal Chief Executive
- ii. 51 Assembly members, made up of 36 elected by universal adult suffrage and 15 other members appointed by Government in line with the Local Government Act 462, which requires the Government to appoint 30% of the elected Assembly members in consultation with interest groups.
- iii. The Member of Parliament in the Municipal

The Municipal Chief Executive, who represents the Central Government in the Municipal, chairs the Executive Committee which is responsible for the execution of administrative and executive functions of the Municipal Assembly.

The Executive Committee of the Assembly has a number of sub-committees performing various functions. These include:

- ❖ Finance and Administration Sub-committee
- ❖ Works Sub-committee
- ❖ Social Services Sub-committee
- ❖ Development Planning Sub-committee
- ❖ Justice and Security Sub-committee
- ❖ Sanitation Sub-committee

The sub-committees have deliberative functions and submit results of their deliberations to the Executive Committee for action and steps to be taken. Actions taken are submitted / forwarded to the General Assembly for ratification, approval and implementation.

1.17 Health and Nutrition

Healthcare delivery is very critical for the socio-economic lives of the people of East Mamprusi Municipality. There are a total of 41 health facilities to take care of the population of 210,910 as at the close of 2024. The only highest medical facility in the Municipality is the Baptist Medical Centre in Nalerigu. There is one polyclinic in Gambaga with 3 other health centres at Langbinsi, Gbintiri and Sakogu.

Table 2: Health Facilities and their Locations in the Municipality

ORGANISATIONA L UNIT	CHPS ZONE S	CLINI C	POLYCLINI C	DISTRICT HOSPITA L	HEALT H CENTRE	TOTA L
Gambaga Sub- district	5	0	1	0	0	6
Gbintiri Sub- district	2	1	0	1	1	3
Langbinsi Sub- district	6	0	0	0	1	7
Nalerigu Sub- district	11	0	0	1	0	12
Sakogu Sub- district	7	2	0	0	1	10
East Mamprusi	31	3	1	1	2	38

1.18 Education

The education indicators for the Municipality reveal significant challenges in quality and access. The school survival or completion rate highlights an overall improvement from a baseline of 85.4% to an outcome of 95.2%, indicating progress in retention across the educational levels. At the kindergarten level, the rate increased from 87.1% (males) and 88.6% (females) at baseline to 91.2% (males) and 96.5% (females) at the outcome, with females recording a sharper rise. For primary six, the baseline stood at 90.3% for males and 68.2% for females, compared to 90.2% for males and 84.3% for females at the outcome, showing stability among males but significant gains among females. At JHS 3, survival improved from 75.8% to 84.5% for males and from 61% to 74% for females, highlighting overall progress but with females still trailing behind males.

Table 3: Teachers ratio to students in East Mamprusi Municipal

Indicator	Ratio of Trained Teachers to Students	Teacher - Pupil/ Student Ratio	Average class sizes	Pupil/Student/Desk Ratio
KG	1:76	1:94	1:113	1:2
Primary	1:53	1:50	1:61	1:4
JHS	1:23	1:26	1:36	1:3

Education remains the key development strategy to reduce poverty and improve the standard of living of the people. The focus of development strategy in the period under review was: to increase enrolment and retention of pupils and students in schools with focus on the girl child; Improving infrastructure through the elimination of schools under trees and improving the performance of pupils and students in the Municipal with emphasis on BECE. The analysis of the educational situation reveals mixed results. Whilst significant strides have been in some areas much still needs to be done in other areas.

There has been improvement in the area of infrastructure in the last four years. The number of schools (both public and private) has witnessed a phenomenal increase since 2014 as shown in the fig. below:

Constraints / Challenges

- Inadequate infrastructure in schools (classroom blocks, teachers accommodation, ICT centres and libraries, Water and sanitation facilities, etc)
- Poor attitude of some teachers
- Poor BECE performance
- Inadequate school furniture
- Inadequate logistics (example Textbooks, fuel) for monitoring and supervision
- Inadequate staffing (Quality and quantity)
- High school dropout by pupils in public schools particularly the basic level

19 Water and Sanitation

1.19.1 Water Supply

The main sources of domestic water supply in the Municipal are from rivers, streams, wells, boreholes, ponds and dams. Most rivers, streams, ponds and dams dry up towards the end of the dry season making water a scarce commodity. At such periods water may be obtained from shallow wells.

The Municipal has potable water coverage of about 56.12%, using the conventional / standard method of computation (Population threshold). This figure however is quite deceptive, as the distances from the facilities to the farthest houses in the various communities have not been taken into consideration due to the difficulty involved in the computation. As such there are still a lot of people in the municipal who do not have adequate access to potable water. The municipal has a total number of One Hundred and Sixty-seven (167) boreholes, out which Ninety-nine (99) are functional, fifty-eight (58) are broken down (reparable), and Ten (10) spoilt beyond repair (irreparable). Below is a table of the various sources of water in the Municipal:

1.19.2 Sanitation

Households with access to improved sanitation increased from 25% in 2021 to 35% in 2024, moving closer to the 2025 target of 40%, while open defecation reduced from 65% to 59%, though still significantly high compared to the target of 45%. The number of communities certified open defecation-free fell from a baseline of 123 to 30 in 2024, instead of improving to the 2025 target of 45, suggesting setbacks in community-led sanitation campaigns. Access to potable drinking water improved from 50.5% to 65%, exceeding the 2025 target of 55%, reflecting positive gains in safe water delivery. Progress was also noted in schools and health facilities, with 62% of schools and over 90% of health facilities now having improved WASH facilities. However, waste management remains a concern, with the volume of waste safely collected dropping from 4,896 tons in 2021 to just 1,352 tons in 2024, well below the target of 2,028 tons.

Table 4: Access to Water, Sanitation, and Hygiene Services

Indicator	Baseline (2021) %	2025 target %	Outcome (2024) %
<i>% of households with access to improved sanitation facilities</i>	25%	40%	35%
<i>% of households practicing open defecation</i>	65%	45%	59%
<i>Number of communities certified open defecation free (ODF)</i>	123	45	30
<i>% of public schools with functional gender-separated toilets</i>	-	80.6	80.6
<i>% of population with access to potable drinking water sources</i>	50.5%	55%	65%
<i>% of schools with improved WASH facilities</i>	-	62%	62%
<i>% of health facilities with improved sanitation</i>	-	90.5%	90.5%
<i>% of health facilities with improved WASH facilities</i>	-	0.3%	
<i>Volume of waste safely collected</i>	4,896tons	2,028	1352

Constraints / Challenges

- Inadequate / Erratic supply of potable water
- Poor maintenance of water facilities
- Poor disposal of solid waste
- Lack of final disposal site
- Inadequate toilet facilities (Public and households)
- Poor maintenance of public Sanitation facilities
- Inadequate refuse containers (communal skip containers and household bins)
- Indiscriminate disposal of refuse
- Poor and inadequate drainage facilities
- Inadequate tools and equipment to enhance the operations of the EHU/Waste Management Department
- Inadequate funding for capital investment for effective delivery of waste management services

1.20 Municipal / Micro Economy

East Mamprusi Municipal is richly endowed with human and natural resources, particularly, tourists attraction sites such as the Naa Djerjina Walls (which built without water but only

milk and honey in Nalerigu) , the Gambaga Witches Camp, the Moshie chiefs ancestry grave sites in Gambaga etc. The Municipal has three functional markets at Gbintiri, Nalerigu and Langbinsi which serve as sources of revenue for the Assembly.

The population of East Mamprusi Municipality as of 2021 was 188,006 (Ghana Statistical Service, 2021). The population simply had within the period of 11 years increased by 66,997 from the 2010 population of 121,009. This implies that population growth rate is 4% per annum. Of this population, 57% resides in the rural areas of the Municipality with the remaining 43% residing in the urban communities. The largest of these urban communities are Nalerigu, Gambaga, Langbinsi, Gbintiri, Nagbo and Sakogu. At the end of 2024, the population of the Municipality was projected at 211,976 in totality, comprising 48.5% males and 51.5% females. The population of the Municipality is expected to increase to 291,918 by 2029, assuming the growth rate (of 4% per annum) will not change significantly within this period.

1.21 Occupation

Occupation describes the job a person spent his/her time. It looks at the main job/task a person is performing. From table 4.3, skilled, agriculture, forestry and fishery workers (84.4 %) dominated the other sectors followed by services and sales workers (7.1%) and craft and related trades workers. About 88 percent of the employed males are in skilled, agricultural, forestry and fishery while females are 80.5 percent. The high proportion of the number of persons in agriculture, forestry and fishery explain the point that the area is predominantly agrarian. Craft and related trades workers registered the second position with 1,824 persons (2.5 percent males and 5.1 percent females). Other occupations scored the least number with 2 persons.

Agriculture, forestry and fishing employed 83.6 percent, 87.6 percent male and 79.7 percent female population. Wholesale and retail, repair of motor vehicles and motorcycles accounted for 6.5 percent of the population 15 years and older. This is disaggregated into 9.0 percent female and 3.9 percent male. The high proportions of household heads in the wholesale, retail, repair of motor vehicles and motorcycles industry is probably due to the fact that people are not able to gain employment in the formal sectors and therefore resort to establishment of Small and Medium Enterprises (SMEs) . Accommodation and food services activities employed 3.2 percent female and 0.3 percent male.

1.22 Agriculture

Agriculture is one of the major productive activities in the Municipal. The sector engages over 80% of the municipal's labour force. Production is basically food and cash crops at subsistence level. The major food crops include maize, millet, cassava, yam etc. The major cash crops include Rice, Groundnuts, Sorghum, Soya beans etc.

Constraints / Challenges

- High incidence of Food and Nutrition Insecurity - (Inadequacy of food all year round).
- Lack of irrigation infrastructure
- High incidence of Crop and Livestock Pests / Diseases
- High Post Harvest losses
- Low extension coverage
- High dependence on seasonal and erratic rainfall
- Inadequate staffing

1.23 Climate Change and Vulnerability Analysis

The people in the Municipal face a number of vulnerability factors. The depletion of the natural vegetation cover has exposed the area to natural disasters such as wind / rainstorms and flooding of devastating proportions. Over the last three years alone, over 50 classroom blocks and several households have been reported ripped off. Many families have lost their farms to flood due to the erratic and increasing variability of rainfall pattern in recent times. This situation does not only expose the people to a high possibility of food insecurity but also increases the overall poverty situation in the municipal as majority of the people eke out a living from peasant agriculture that depends on the generosity of nature.

The Municipal is a host to the Gambaga witches camp that provides shelter for several women accused of witch craft. The women in the camp face all sorts of issues as the stigma of being branded a witch with all the associated societal ridicule and scorn, abandonment from family members, close associates and friends as well as overcrowding among others. This has exposed the affected women to all kinds of psychological torture and the general sense of neglect by the society. Tremendous efforts are being made by the Assembly and other stakeholders to provide decent accommodation and skills development for the inmates of the camp to improve their standard of living and their sense of belonging.

The witches camp has twenty-five (25) compound houses which accommodate the inmates consisting of twelve (12) Bimobas, twenty-seven (27) Mampruisis, eleven (11) Dagombas,

seven (7) Kusasis and Talenses, and thirty-two (32) Konkombas, totaling 89 alleged witches. However this number is not fixed, it can either increase or decrease at any time due to new admissions or reintegration and repatriation exercise being carried out by the Presbyterian Go-Home Project. Their children also number up to 49. These are children of school going age and mostly sponsored by the Presbyterian Go-Home Project.

The witches' camp has a well-organized Leadership / Management structure. The Gambarana is the head of the camp and as well exercises an oversight responsibility over the camp. Leadership of the alleged witches includes the eldest surviving woman, the "Magazia" appointed by the Priest / Chief. The leader is believed to be powerful and is responsible for settling minor disputes among the women's population. The leader mobilizes and takes instruction from the Chief / Priest and disseminates information to the women in the camp. In instances in Gambaga where there are more than one ethnic group, each group has its own leader.

The fact that almost all the inmates in the camp are women shows the level of vulnerability of the female sex in the society. Many women continue to lag behind their male counterparts in areas of decision making, property ownership, education as well as health as in most cases the decision to access medical care by women is influence by the man. This situation continues to weaken not only the ability of the female sex to lift themselves out of poverty, misery and want but also the overall development of the area as the female sex constitute majority of the population in the municipal. The Assembly will continue to ensure gender equity in its development efforts to provide equal opportunity for all to develop their God given potentials for the benefit of the municipal.

HIV/AIDs cases in the Municipal appear to be on the rise. Statistics from the Municipal directorate of health indicates that there have been increases of cases screened in the health centers from 12% in 2012 to 19% in 2013. Even though the municipal hospital is a referral center for many municipals and there is a possibility that some of the cases could be from other municipals the case still remains that the disease is real and its incidence appears to be rising in the Municipal .

There are a number of people living with various kinds of disabilities in the Municipal. According GSS (2010), over 3,000 people in the municipal live with different kinds of disabilities. These people are faced with various challenges such as inadequate access to education, poor access to economic assets, inadequate voice in decision making at all levels

poor access to public infrastructure and the general societal neglect among others. The Assembly will continue to roll out programmes such as the LEAP, improving access to public infrastructure and others to ameliorate the plight of this segment of the society.

Table 6: Types of Disabilities in the Municipal.

No.	Type of Disability	Population
1	Visually Impaired	335
2	Mentally ill	120
3	Physically Challenged	380
4	Hearing Impaired	92
5	Difficulty in Speaking	83
	TOTAL	1,010

Source: Department of Social Welfare & Community Development, 2025.

1.24 Gender Profile and Analysis

There exists an appreciable gap in the politico-socio economic development situation of men and women in the municipal. This gap over the years has persisted and has the tendency of accentuating itself in a manner that if care is not taken would affect the overall development in the municipal. Even though women constitute majority of the municipal's population they lag behind their male counterparts in almost every aspect of the municipal's development.

1.25 Socio-Economic Infrastructure

1.26.1 Road Network and Condition

There is a trunk road which passes through Gambaga, the Municipal capital, from Walewale in the West Mamprusi Municipal to the Bunkpurugu, Yonyoo-Nasua Municipal. It is the only reliable and motorable road in the municipal as it tarred from Walewale to Nalerigu. The remaining stretch of the road is gravel.

All other roads in the municipal are feeder roads with various levels of Motorability. The municipal has a total feeder road length of about 349 Km, which have been classified as bad. Generally, most of the feeder roads are often not motorable during the rainy season due to torrential rains and lack of periodic maintenance. The affected communities are usually cut off from the rest of the communities in the municipal during the peak rainy season.

The potential effects of the situation are enormous. For instance, the affected settlements are unable to access certain facilities such as health, market and education. At the same time, it is often difficult to reach them with development programmes and interventions.

It also slows down the growth rate of agriculture productivity and its adverse effects on the socioeconomic progress of the Municipal. There is high a incidence of drudgery in transporting agricultural produce in the Municipal, as farm produce is conveyed by head-portage from farms to the village and / or market centres for sale, to which women and children are the usual victims. This often results in about 70% to 80% loss of farm produce.

List of Feeder Roads in the Municipal

Table 5: Engineered Feeder Roads

No.	Names	Length (Km)	Condition
1	Gambaga – Tamboku Feeder Road	24	Fair
2	Nagboo – Jawani Feeder Road	12	Fair
3	Tuni –Kikaya Feeder Road	6	Fair
4	Kasape –Saamini Feeder Road	6.7	Fair
5	Langbinsi –Tinpela Feeder Road	12	Fair
6	Barinya - Kukugbini Feeder Road	3	Fair
7	Jawani – Tuni Feeder Road	11	Fair
8	Langbisi –Wundua Feeder Road	9.5	Fair
9	Langbisi – Tangbini Feeder Road	8	Fair
10	Kuligona Jn – Nanyeri Feeder Road	8	Fair
11	Boku-Burugu - Dimia Feeder Road	13	Fair
	TOTAL	113.2	

Table 6 reveals that the municipality has 15 partially engineered feeder roads covering 132.5 km, all classified as being in poor condition. Examples include the Sakogu–Gurugu–Nasuani road (17 km) and the Nalerigu–Zaari–Latari Road (15 km).

Table 6: Partially Engineered Feeder Roads

No.	Names	Length (km)	Condition
1	Sakogu - Gurugu - Nasuani Feeder Road	17	Poor
2	Sokugu – Tintariga – Toak Feeder Road)	14	Poor
3	Bongbini – Gbangu Feeder Road	2.5	Poor
4	Kuligona – Suniboma – Tangbin Feeder Road	9	Poor
5	Nalerigu – Zaari –Latari Feeder Road	15	Poor
6	Gbandabila Jn – Gbandabila Feeder Road	6.5	Poor
7	Jawani – Kpalivaka Feeder Road	6.5	Poor
8	Jawani – Zandua –Dazio Feeder Road	9	Poor
9	Namasim –Sumniboma-Zugilugu Feeder	6	Poor

No.	Names	Length (km)	Condition
	Road		
10	Jawani - Duuni Feeder Road	9	Poor
11	Nagboo – Kpikparibogu Feeder Road	5	Poor
12	Nalerigu – Dintigi Feeder Road	5	Poor
13	Kanchina – Gbandabila Feeder Road	5	Poor
14	Zarantinga –Tambuku Feeder Road	12	Poor
15	Zarantinga –Tichirigataba Feeder Road	11	Poor
	TOTAL	132.5	

The table below highlights 11 roads totalling 104.8 km, all of which are in “too poor” condition. Roads such as Sakogu–Siisi (17 km) and Wundua–Dimia (13 km) illustrate the severe deterioration that makes these routes virtually impassable, especially during rains.

Table 7: Non-Engineered Feeder Roads

No.	Names	Length (KM)	Condition
1.	Sakogu –Siisi Feeder Road	17	Too Poor
2.	Gbintiri –Waburi Feeder Road	2.6	Too Poor
3.	Langbinsi – Bunbuazio Feeder Road	3.5	Too Poor
4.	Wundua –Dimia Feeder Road	13	Too Poor
5.	Gbandaa - Aderibea –Limu Feeder Road	7	Too Poor
6.	Dimia – Cherifoyiri - Wundua Feeder Road	11	Too Poor
7.	Sakogu –Siisi Feeder Road	17	Too Poor
8.	Gbintiri –Nagbai Feeder Road	6.7	Too Poor
9.	Gambaga – Bukperi Feeder Road	7	Too Poor
10.	Nanyeri – Tuna Feeder Road	13	Too Poor
11.	Gbandaa – Limu – Nakpanzugu Feeder Road	7	Too Poor
	TOTAL	104.8	

1.25.2 Energy

Fuel wood and the stem (dried) of sorghum and millet are generally used for cooking in the municipal. The use of liquefied petroleum gas even though encouraged is on a low scale due to the non-availability of sales outlets in the municipal.

The Municipal capital, including all the five Town / Area Council capitals are connected to the National Grid, with a few major towns and communities being beneficiaries.

Power supply in the Municipal is very erratic, sometimes raising serious security concerns. The frequent power outages, apart from destroying personal properties (electrical appliances), also serves as a fertile ground for the perpetration of various crimes, including armed robbery.

Below is a list of communities that are connected to the National Grid:

Table 8 : Communities with Electricity in the Municipal

NO	NAME OF COMMUNITY	TOWN / AREA COUNCIL
1	Gambaga	GAMBAGA
2	Tamboko	
3	Dagbribori	
4	Namiyela	
5	Bongbini	
6	Gbangu	
7	Nayoko	
8	Nyingari	
9	Nalerigu	
10	Zarantinga	
11	Nagboo	
12	Jawani	
13	Zaari	
14	Zanduwa	
15	Kolonvai	
16	Kologbana	LANGBINSI
17	Langbinsi	
18	Saamini	
19	Kasape	
20	Buzulugu	
21	Wundua	
22	Namangu	
23	Burugu	
24	Dingbriga	
25	Bowko	SAKOGU
26	Sakogu	
27	Namasim	
28	Soasogbiri	GBINTIRI
29	Gbintiri	

Table 9: List of Communities without Electricity in the Municipal

No	Community	No	Community	No	Community	No	Community
1.	Kanchina	1.	Palchina	1.	Gadantina	1.	Jablajo
2.	Kpalvaka	2.	Lumu	2.	Jagoo	2.	Toak No1
3.	Gbala	3.	Mozia	3.	Wangai	3.	Gbintri
4.	Zimasa	4.	Kutong	4.	Kabogri	4.	Samni
5.	Yankaziya	5.	Naani	5.	Banjam	5.	Dindani
6.	Dabari	6.	Bumbuazio	6.	Gazeretinga	6.	Sakogu
7.	Bongni	7.	Tindantua	7.	Zarantina	7.	Sumniboma No1
8.	Bantamari	8.	Dintigi	8.	Tindantua	8.	Zikaya
9.	Adaribe	9.	Tangbini	9.	Lebzinga	9.	Takoratinga
10.	Jimbari	10.	Gbankukua	10.	Nagbai	10.	Sakurukpan
11.	Kufori	11.	Billalugri	11.	Kpasoku	11.	Lakpiri
12.	Tuugbini	12.	Naani	12.	Nangua	12.	Namburigu
13.		13.		13.		13.	

PROJECTED POPULATION FOR EAST MAMPURSI MUNICIPAL ASSEMBLY

S/N	ZONAL COUNCILS	COMMUNITIES	PROJECTED POPULATION 2024
1.		1 BANJA	300

2.	GBINTIRI	2. BILALLUGLI	276
3.		3. BINDURI	329
4.		4. DIBONI	430
5.		5. GBANDABILI	423
6.		6. GBANDARI	342
7.		7. GBANGDAA	583
8.		8. GBANGKUKUA	398
9.		9. GBANPAA	240
10.		10. GBINTIRI	3,534
11.		11. JAGANDERE	230
12.		12. JAGOO	608
13.		13. JIMBILE	3,347
14.		14. KABOGRI	485
15.		15. KANCHINA	945
16.		16. KATANBUGULI	260
17.		17. KPALGU	484
18.		18. KPASOKU 1	439
19.		19. KPATINGA	567
20.		20. KUALIK	1,035
21.		21. KUTONG	2,422
22.		22. LAPELIGA	161
23.		23. LUMU	648
24.		24. MEIMBENA	455
25.		25. MOZIA	621
26.		26. NAANI	2,186
27.		27. NAGBAI	347
28.		28. NAJONG	4,018
29.		29. NAMBORIGU	616
30.		30. NAWUNA	465
31.		31. PALCHIRA	511

32.		32. PORINGONG	378
33.		33. SAGURIKPON	372
34.		34. SIEEYA(ZIKAYA	404
35.		35. TINDANTUA	425
36.		36. WABURI	362
37.		37. WANGAI	792
38.		38. YANKAZIA	120
39.		39. BANAWA	5
40.		40. BANGU	517
41.		41. BONGNI	1,014
42.		42. DABARI	832
43.		43. DINDANI	2,146
44.	SAKOGU	44. GADANTINGA	675
45.		45. GAZERITINGA	358
46.		46. GBILINERI	591
47.		47. GURUGU YANKAZIA	600
48.		48. JERIGI-TINGA	905
49.		49. KAKURBONG	688
50.		50. KPATIRI-TINGA	498
51.		51. KPIKPARGBINI	640
52.		52. LAFORIM	562
53.		53. LEBZINGA	620

54.		54. NAKPABON	350
55.		55. NAMENBOKU	966
56.		56. SAKOGU	6,239
57.		57. SUASUBIGI	1,140
58.		58. SUMMNIBOMA	1,225
59.		59. TAKORATINGA	505
60.		60. TAMBINA	190
61.		61. TINTARIGA	562
62.		62. TOAK	1,718
63.		63. TUNGBINI	442
64.		64. WAAKORITINGA	434
65.		65. WUNZUGUTINGA	642
66.		66. YANKAZIA	834
67.		67. YAPALA	1,131
68.		68. ZOJILIGU	1,057
69.	NALERIGU	69. ADARIBE	331
70.		70. BAADURI	396
71.		71. BANJAM	307
72.		72. BARINYA	42
73.		73. TANGNINI 2	326
74.		74. BUYA	133
75.		75. DAAZIO	378
76.		76. DINTIGI	329
77.		77. JABLAJO	1,337
78.		78. JAWANI	2,291
79.		79. KOLINVAI	1,927
80.		80. KPALIVAKA	615

81.	81. KPIKPARIBOBGU	468
82.	82. KUKUGBINI	998
83.	83. KULGONA	1,356
84.	84. LAATARI	1,602
85.	85. LANGBINA	926
86.	86. NAGBO	9,488
87.	87. NALERIGU	22,515
88.	88. NAMASIM	2,536
89.	89. NANGUA	597
90.	90. NORILOBI	439
91.	91. SUMNIBOMA 1	1,634
92.	92. SUMNIBOMA 2	1,257
93.	93. TEANOBA	1,000
94.	94. TICHIRIGI-TAGA	1,479
95.	95. TINTARIGA	607
96.	96. TUNI	2,400
97.	97. TUZIA	537
98.	98. YUNYORANYIRI	802
99.	99 .ZA-ARI	3,626
100.	100. ZAMBULUGU	677
101.	101. ZANDUA	1,215
102.	102. ZARANTINGA	1,865
103.	103. ZIGUM	610
104.	104. ZIKAYA	730
105.	105. ZINIAYA	144
106.	106. BOWKU	1,950

107.		107. BUMBOAZIA	1,594	
108.		108. BURUGU	2,625	
109.		109. BUZULUNGU	1,166	
110.		110. CHIRIFOYIRI	661	
111.		111. DIMIA	786	
112.		112. GBINGBIRIGA	690	
113.		113. KASAPE	2,109	
114.	LANGBENSI	114. LANGBENSI	13,967	
115.		115. NAMANGO	3,157	
116.		116. POANAAYIRI	597	
117.		117. SAMNI	5,865	
118.		118. SUMNIBOAMA	1,212	
119.		119. TANGBENI	2,116	
120.		120. TIMPEILA	1,081	
121.		121. WUDUA	460	
122.			122. YAROYILI	497
123.		GAMBAGA	123. BONTAMBARI	521
124.	124. BONGBINI		2,147	
125.	124. DAGBERIBOARI		3,994	
126.	125. GAMBAGA		17,207	
127.	126. GBALLA		103	
128.	127. GBANGU		4,522	
129.	128. LA-ATARIGU		1,126	

130.		129.NAMENYALA	252
131.		130.NANORI	371
132.		131. NAYORKO	541
133.		132. NYINGARI	1,185
134.		133. TAMBOKU	1,841
135.		134. TINSUNGU	1,419
136.		136. ZIMASA	118

Table 10 : Summary of Key Development Problems / Issues / Gaps Identified

The key development issues that emanated from the situational analysis include:		
NO	FOCUS AREA	IDENTIFIED ISSUE
1.	Physical Characteristics	<ul style="list-style-type: none"> Rapid environmental degradation
2.	Demographic Characteristics	<ul style="list-style-type: none"> High / Severe Population Pressure
3.	Water and Sanitation	<ul style="list-style-type: none"> Inadequate / Erratic supply of potable water Inadequate Coverage of Sanitation and Hygiene facilities
4.	Health Services	<ul style="list-style-type: none"> Inadequate access to quality health care in the municipal High stigmatization and discrimination against PLWHAS
5.	Education	<ul style="list-style-type: none"> Lowering / Deteriorating Standard of education in the municipal
6.	Agriculture	<ul style="list-style-type: none"> High incidence of Food and Nutrition Insecurity - (Inadequacy of food all year round).
7.	Local Economy	<ul style="list-style-type: none"> Underdeveloped small-scale industries
8.	Economic Infrastructure	<ul style="list-style-type: none"> Poor condition of road networks Inadequate road network Limited electricity coverage
9.	Revenue Generation	<ul style="list-style-type: none"> Inadequate and unreliable data on ratable items Low mobilization of internally generated funds by the Assembly
10.	Governance	<ul style="list-style-type: none"> Weak Institutional capacity for decentralization Limited participation of women in decision making process

CHAPTER TWO

COMPOSITE ACTION PLAN FOR 2026

This contains the specific development programmes to be implemented in the 2026 Action Plan (Programmes of Action)

These interventions are needed to address the development problems in the area.

The 2026 Annual Action Plan has been formulated taking into consideration the under listed:

- Municipal Medium-Term Development (2026-2029)
- The municipal sub-structure plans prepared by the Town and Area Councils in consultation with their respective communities.
- Community Action Plan of Various zonal Councils.

Table 11: COMPOSITE ANNUAL ACTION PLAN 2026

Projects	Location	Time Frame				Cost				Project Status		Implementing Institution/Department	
		Q1	Q2	Q3	Q4	GoG	DACF	IGF	Others (Specify)	New	Ongoing	Lead	Collaborating
ECONOMIC DEVELOPMENT - AGRICULTURE AND LIVELIHOODS													
Objective: Increase productivity of selected crops, livestock/poultry by 20% by the end of 2029.													
Programme: Crop and livestock development programme													
Projects	Location	Time Frame				Cost				Project Status		Implementing Institution/Department	
		Q1	Q2	Q3	Q4	GoG	DACF	IGF	Others (Specify)	New	Ongoing	Lead	Collaborating
Supply and promote the use of drought-tolerant, high-yielding seed varieties.	5 Agriculture sub-districts Nalerigu, Sakogu, Gbintiri, Gambaga & Langbinsi.		X	X		250,000.00	-	-	100,000.00		XX	MAD	RAD, SARI
Establish demonstration sites on crop rotation, intercropping, and mixed farming,	Gbandaa, Jagoo, Palchira, Kabogri, Kualik, Kanchina, Zojilgu Jimbale, Mozia, Naamburigu,		X	X		-	-	-	12,000.00		XX	MAD	RAD

Projects	Location	Time Frame				Cost				Project Status		Implementing Institution/Department	
		Q1	Q2	Q3	Q4	GoG	DACF	IGF	Others (Specify)	New	Ongoing	Lead	Collaborating
and train farmers on integrated soil fertility management.													
Establish six Farmer Field Schools on agronomic practices in selected communities across the agricultural sub-districts..	Langbinsi, Gambaga, Nalerigu, Sakogu, Gbintiri, Nagboo		X	X		-	12,600.00	-	-	X	X	MAD	RAD
Train AEAs and farmers on diseases and pests' management.	Gambaga, Langbinsi & Gbintiri	X	X			14,000.00	-	-	-	X	X	MAD	RAD, SARI
Implement agro-forestry like boundary tree planting,	Nalerigu & Gambaga		X	X		-	9,000.00	-	-	X	X	MAD	Forestry Dept.

Projects	Location	Time Frame				Cost				Project Status		Implementing Institution/Department	
		Q1	Q2	Q3	Q4	GoG	DACF	IGF	Others (Specify)	New	Ongoing	Lead	Collaborating
incorporating trees in croplands and pastures													
Implement intercropping and crop rotation practices to reduce pests and disease in crops	Namasim, Wundua, & Jawani		X X	X X		-	-	-	8,000.00	X X		MAD	Regional Dept. of Agric
Promote organic fertilizers, composting, and improved manure management	Wundua, Nagboo, Sakogu, Gbintiri & Jawani		X X	X X		-	-	-	13,600.00	X X		MAD	Regional Dept. of Agric
Conduct training for farmers on the use of green manure and crop residues for soil fertility improvement.	Wundua, Nagboo, Sakogu, Gbintiri & Jawani	X X	X X			-	-	-	12,000.00	X		MAD	RDA
						264,000	21,600.		145,600				

Projects	Location	Time Frame				Cost				Project Status		Implementing Institution/Department	
		Q1	Q2	Q3	Q4	GoG	DACF	IGF	Others (Specify)	New	Ongoing	Lead	Collaborating
						.00	00	-	.00				
Programme Total									431,200.00				
Objective: Reduce post-harvest losses from 30% to 5% by 2029													
Programme: Post-harvest management programme.													
Projects	Location	Time Frame				Cost				Project Status		Implementing Institution/Department	
		Q1	Q2	Q3	Q4	GoG	DACF	IGF	Others (Specify)	New	Ongoing	Lead	Collaborating
Organize training sessions for farmers and processors on food safety, standards, labeling, packaging, and quality control.	Wundua, Nagboo, Gbandaa, Gbintiri & Jawani	X X			X X	-	5,500.00	-	15,500.00		XX	MAD	Regional WIAD

Projects	Location	Time Frame				Cost				Project Status		Implementing Institution/Department	
		Q1	Q2	Q3	Q4	GoG	DACF	IGF	Others (Specify)	New	Ongoing	Lead	Collaborating
Facilitate the linkage of food processors with the School Feeding Secretariat to promote product off-take.	Gambaga			X X	X X	5,000.0 0	-	-	-		XX	MAD	Regional WIAD
Train farmers on proper harvesting, handling and storage to reduce damage and deterioration.	Gbandaa, Yankazia, Membena, Adaribe,		X X	X X	X X	-	5,700.0 0	-	-		XX	MAD	RDA
Lobby to improve staffing and logistics for expanded outreach services.	Gambaga	X X	X X	X X	X X	-	10,000. 00	-	-		XX	Muni. Assembly	OHLGS

Projects	Location	Time Frame				Cost				Project Status		Implementing Institution/Department	
		Q1	Q2	Q3	Q4	GoG	DACF	IGF	Others (Specify)	New	Ongoing	Lead	Collaborating
Disseminate information on improved post-harvest technologies and improved packaging materials to keep produce fresh and reduce waste.	Nalerigu (Tizaa/ Nobya Radio)	X X	X X	X X	X X	14,000.00	-	-	-		XX	MAD	Nobyah/Tizaa Radio
Conduct regular Farmer Field Schools and on-site demonstrations to train farmers in practical post-harvest loss reduction techniques.	Sakogu, Nagboo, Jawani& Adaribe	X X			X X	-	-	10,100.00	-		XX	MAD	RDA
Establish pilot agro-processing facilities to add value to key crop	Gbangu, Bongbini, Langbinsi	X X			X X	-	26,000.00	-	-		XX	MAD	RDA

Projects	Location	Time Frame				Cost				Project Status		Implementing Institution/Department	
		Q1	Q2	Q3	Q4	GoG	DACF	IGF	Others (Specify)	New	Ongoing	Lead	Collaborating
value chains.													
Conduct training for farmers on improved crop handling and on-farm storage techniques.	La-atarigu, Dagbiriboari, Bowku, Samni	X X			X X	-	-	-	12,500.00		XX	MAD	RDA
Train Agricultural Extension Agents (AEAs), farmers, and aggregators on effective pest control methods.	Gambaga		X X	X X		-	11,000.00	-	-	X X		MAD	RDA
Organize workshops and seminars for AEAs, farmers, and market women on biological and technical methods for reducing post-	Gambaga & 3 zones			X X	X X	-	13,000.00	-	-		XX	MAD	RDA

Projects	Location	Time Frame				Cost				Project Status		Implementing Institution/Department	
		Q1	Q2	Q3	Q4	GoG	DACF	IGF	Others (Specify)	New	Ongoing	Lead	Collaborating
harvest losses.													
Organize Gender sensitive education designed for women to enhance their role in PH activities.	Gambaga			X X	X X	-	8,000.00	-	-		XX	MAD	RDA
Establish partnerships with NGOs and farmer groups to implement post-harvest loss (PHL) awareness and education programs.	Gambaga				X X	-	5,000.00	-	-		XX	MAD	RDA
						19,000.	84,200.	10,100	28,000.				

Projects	Location	Time Frame				Cost				Project Status		Implementing Institution/Department	
		Q1	Q2	Q3	Q4	GoG	DACF	IGF	Others (Specify	New	Ongoing	Lead	Collaborating
						00	00	.00	00				
Programme Total									141,300.00				

Objective: Enhance agricultural production and agri-business for economic transformation

Programme: Irrigation infrastructure programme

Projects	Location	Time Frame				Cost				Project Status		Implementing Institution/Department	
		Q1	Q2	Q3	Q4	GoG	DACF	IGF	Others (Specify	New	Ongoing	Lead	Collaborating
Support market gardening initiatives through the use of small-scale irrigation systems.	Nagboo& Namasim	X X			X X	-	4,000.00	-	8,000.00		XX	MAD	RDA
Conduct training for farmers on dry-season agronomic	Nagboo& Namasim	X X			X X	-	-	-	5,000.00		XX	MAD	RDA

Projects	Location	Time Frame				Cost				Project Status		Implementing Institution/Department	
		Q1	Q2	Q3	Q4	GoG	DACF	IGF	Others (Specify)	New	Ongoing	Lead	Collaborating
practices.													
Facilitate the creation of market linkages for vegetable producers.	Nagbo& Namasim	X X			X X	-	-	-	4,000.00		XX	MAD	RDA
Facilitate access to improved seeds, organic and inorganic fertilizers and small irrigation equipment	Nagbo& Namasim	X X			X X	-	-	-	7,000.00		XX	MAD	RDA
Promote diversified cropping of legumes, leafy green vegetables, and orange fleshed sweet potatoes.	Nagbo, Nalerigu & Jawani	X X			X X	-	-	-	10,000.00		XX	MAD	RDA

Projects	Location	Time Frame				Cost				Project Status		Implementing Institution/Department	
		Q1	Q2	Q3	Q4	GoG	DACF	IGF	Others (Specify)	New	Ongoing	Lead	Collaborating
Facilitate the linkage of feeding programs to local procurement through agricultural aggregators.	Jawani, Kolinvai and Yankazia No.2	X X	X X			-	4,000.00	-	-		XX	MAD	RDA
Provide logistical support for monitoring and evaluation activities.	Gambaga	X X	X X	X X	X X	-	-	-	16,000.00		XX	MAD	RDA
Establish partnerships to support the development of small ruminant and poultry production value chains.	Gambaga	X X	X X			-	80,000.00	-	500,000.00		XX	MAD	RDA
Promote and support beekeeping activities for	Wundua & samni	X X	X X			-	6,000.00	-	-		XX	MAD	RDA

Projects	Location	Time Frame				Cost				Project Status		Implementing Institution/Department	
		Q1	Q2	Q3	Q4	GoG	DACF	IGF	Others (Specify)	New	Ongoing	Lead	Collaborating
honey production and pollination services.													
Conduct training for youth and women on the fundamentals of fish farming.	Nalerigu	X X			X X	6,000.0 0	-	-	-		XX	MAD	Fishiries
Provide fingerlings, feed, and housing to support the startup of fish farming enterprises.	Nalerigu	X X			X X	-	11,000.00	-	-		XX	MAD	Fishiries
Establish a model fish farm for training and demonstration purposes.	Nalerigu	X X			X X	-	9,000.00	-	-		XX	MAD	Fishiries

Projects	Location	Time Frame				Cost				Project Status		Implementing Institution/Department	
		Q1	Q2	Q3	Q4	GoG	DACF	IGF	Others (Specify)	New	Ongoing	Lead	Collaborating
Deploy extension officers to provide treatment, monitoring, and coaching for ruminants and fish farmers.	Nalerigu	X			X	-	118,000.00	-	-		XX	MAD	Fishiries
						6,000.00	232,000.00	-	550,000.00				
Programme Total									788,000.00				

Objective: Promote livestock and poultry development Increase productivity of selected crops, livestock/poultry by 20% by the end of 2029.

Programme: Crop and livestock development programme

Projects	Location	Time Frame				Cost				Project Status		Implementing Institution/Department	
		Q1	Q2	Q3	Q4	GoG	DACF	IGF	Others (Specify)	New	Ongoing	Lead	Collaborating

Projects	Location	Time Frame				Cost				Project Status		Implementing Institution/Department	
		Q1	Q2	Q3	Q4	GoG	DACF	IGF	Others (Specify)	New	Ongoing	Lead	Collaborating
Identify and promote priority local crossbred ruminants for community-based breeding programs.	Gbintiri Area	X X			X X	-	-	-	30,000.00		XX	MDA	RDA
Establish community nucleus flocks in strategic locations to serve as sources of high-quality breeding males and females.	Nalerigu, Gambaga, Lanbginsi, Gbintiri & Sakogu.	X X	X X	X X	X X	12,000.00	8,000.00	-	-		XX	MDA	RDA
Identify and provide annual training for lead farmers and community animal health volunteers on breeding	Gambaga		X X			-	-	-	40,000.00		XX	MDA	RDA

Projects	Location	Time Frame				Cost				Project Status		Implementing Institution/Department	
		Q1	Q2	Q3	Q4	GoG	DACF	IGF	Others (Specify)	New	Ongoing	Lead	Collaborating
management.													
Strengthen veterinary and animal health services to reduce livestock and poultry mortality.	Sakogu, Nanori, Kulgona, Samni, Nalerigu & Langbinsi	X X	X X	X X	X X	40,000. 00	-	-	25,000. 00		XX	MDA	RDA
Organise extension training and adoption of innovations	Gambaga				X X	15,000. 00	8,000.0 0	-	-		XX	MDA	RDA
Facilitate feed development and dry-season feeding through fodder banking, crop residue conservation, and establishment of community	Nalerigu, Gambaga, Lanbginsi, Gbintiri & Sakogu.			X X	X X	17,500. 00	-	-	25,000. 00		XX	MDA	RDA

Projects	Location	Time Frame				Cost				Project Status		Implementing Institution/Department	
		Q1	Q2	Q3	Q4	GoG	DACF	IGF	Others (Specify)	New	Ongoing	Lead	Collaborating
demonstration sites.													
Establish markets and develop a data and monitoring system for market operations.	Gbintiri and Nalerigu				X X	-	750,000.00	-	-		XX	MDA	RDA
						84,500.00	766,000.00	-	120,000.00				
Programme Total									970,500.00				
LOCAL ECONOMIC DEVELOPMENT													
Objective: To Enhance Domestic Trade from 5% to 20% by 2029													
Programme: Promotion of Local Economic and Development of SMEs.													

Projects	Location	Time Frame				Cost				Project Status		Implementing Institution/Department	
		Q1	Q2	Q3	Q4	GoG	DACF	IGF	Others (Specify	New	Ongoing	Lead	Collaborating
Projects	Location	Time Frame				Cost				Project Status		Implementing Institution/Department	
		Q1	Q2	Q3	Q4	GoG	DACF	IGF	Others (Specify	New	Ongoing	Lead	Collaborating
Establish a business incubation and innovation hub for mentoring.	BRC Gambaga			X		-	-	-	25,000.00		XX	REP	MA, DDA
Establish a business registration help desk at the Business Resource Centre in Gambaga to support entrepreneurs.	BRC Gambaga	X				-	-	-	5,000.00	XX		REP	MA, DDA
Train SMEs on proposal writing and financial literacy to easily access funding.	BRC Gambaga		X			-	-	-	20,000.00		XX	REP	MA, DDA

Projects	Location	Time Frame				Cost				Project Status		Implementing Institution/Department	
		Q1	Q2	Q3	Q4	GoG	DACF	IGF	Others (Specify)	New	Ongoing	Lead	Collaborating
Complete the Construction of Modern Bus Terminal at Nalerigu (UDG1).	Nalerigu	X	X			391,959.00	-	-	-	X	X	GSCSP	MA
Complete the Construction of 1No. 2 Storey Commercial Building with drains and paving Works at Nalerigu (UD2).	Nalerigu	X				745,423.00	-	-	-	X	X	GSCSP	MA
48. Construct two-Storey 80 lockable stores (UDG3 LOT I)	Nalerigu	X				737,561.00	-	-	-	X	X	GSCSP	MA
Construct 75NO. Stalls, external works, washroom, (paving of walkways, cars and lorry park	Gambaga	X				1,173,570.00	-	-	-	X	X	GSCSP	MA

Projects	Location	Time Frame				Cost				Project Status		Implementing Institution/Department	
		Q1	Q2	Q3	Q4	GoG	DACF	IGF	Others (Specify)	New	Ongoing	Lead	Collaborating
(UDG3 LOT2)													
Construct modern market structures in Sakogu to support a 24-hour economic activity.	Sakogu	X X				-	7,000,000.00	15,000.00	-		XX	24 hour Economy Sec.	MA
Construct two-Storey 80 lockable stores (UDG 4 LOT 1)	Gambaga	X X				4,023,914.00	-	-	-	X X		GSCSP	MA
To train 100 youth in digital coding and digital marketing	Nalerigu, Gambaga		X			-	-	-	300,000.00		XX	BRC	Youth Authority
Train 100 youth in App development and e-commerce.	Nalerigu, Gambaga			X		-	-	-	300,000.00		XX	BRC	Youth Authority

Projects	Location	Time Frame				Cost				Project Status		Implementing Institution/Department	
		Q1	Q2	Q3	Q4	GoG	DACF	IGF	Others (Specify	New	Ongoing	Lead	Collaborating
Conduct financial literacy training for 30 young girls and 50 women to enhance effective financial management skills.	Nalerigu, Gambaga, Lanbginsi, Gbintiri & Sakogu.				X	-	-	-	120,000.00	X	X	BRC	BRC, Youth Authority
						7,072,427.00	7,000,000.00	15,000.00	770,000.00				
Programme Total									14,857,427.00				
Objective: To diversify and expand the tourism industry													
Programme: Tourism Infrastructure and Capacity Development.													
Projects	Location	Time Frame				Cost				Project Status		Implementing Institution/Department	
		Q1	Q2	Q3	Q4	GoG	DACF	IGF	Others (Specify	New	Ongoing	Lead	Collaborating

Projects	Location	Time Frame				Cost				Project Status		Implementing Institution/Department	
		Q1	Q2	Q3	Q4	GoG	DACF	IGF	Others (Specify)	New	Ongoing	Lead	Collaborating
Construct two rest stops on the Gambaga Escarpment to support tourism activities.	Gambaga escarpment		X X			-	340,000.00	-	-		XX	MA	Tourism Authority
Develop and promote the Moshi and Whites graves sites in Gambaga as cultural tourism attractions.	Gambaga	X X				-	-	-	250,000.00		XX	Cultural Officer (MCO)	Trad. A, Private Sector, TA
Provide signages to identified tourist sites	Gambaga, Sakogu, Nalerigu, Zarantinga			X X		-	-	10,000.00	-		XX	MA	PPD
Compile and document all tourist attractions within the Municipality for promotion and development.	Gambaga	X X				-	15,000.00	2,000.00	-		XX	MDPO	MPCU

Projects	Location	Time Frame				Cost				Project Status		Implementing Institution/Department	
		Q1	Q2	Q3	Q4	GoG	DACF	IGF	Others (Specify)	New	Ongoing	Lead	Collaborating
Prepare and develop informational literature for each tourist attraction in the Municipality.	Gambaga	X X	X X			-	12,000.00	2,000.00	-		XX	MCO	Community Members
Conduct training programs for tourist guides to enhance their skills and knowledge.	Nalerigu		X X			25,000.00	-	-	-		XX	GTA	MA, RPCU
Compile and produce informational literature on the Mamprugu festivals for cultural promotion and awareness.	Nalerigu and Gambaga			X X		-	-	10,000.00	-		XX	MCO	Community Members

Projects	Location	Time Frame				Cost				Project Status		Implementing Institution/Department	
		Q1	Q2	Q3	Q4	GoG	DACF	IGF	Others (Specify)	New	Ongoing	Lead	Collaborating
Establish and train two cultural troupes, providing them with traditional costumes for performances.	Nyingari, Zarantinga				X X	-	25,000.00	-	-		XX	MCO	MPCU
Develop a Tourism Development Action Plan for the Municipality.	Gambaga		X X			-	35,000.00	-	-		XX	MDPO	MPCU, Ams
						25,000.00	427,000.00	24,000.00	250,000.00				
Programme Total									726,000.00				
SOCIAL DEVELOPMENT													
EDUCATIONAL DEVELOPMENT													
Objective: Promote access to education for all children of school going age													

Projects	Location	Time Frame				Cost				Project Status		Implementing Institution/Department	
		Q1	Q2	Q3	Q4	GoG	DACF	IGF	Others (Specify)	New	Ongoing	Lead	Collaborating
Programme: Educational Infrastructure and Quality Improvement.													
Projects	Location	Time Frame				Cost				Project Status		Implementing Institution/Department	
		Q1	Q2	Q3	Q4	GoG	DACF	IGF	Others (Specify)	New	Ongoing	Lead	Collaborating
Construct 5 new 3unit classroom blocks.	Kualik, Buzulinga, Gbingbiriga, La-Tari, Wunzuritinga	X X				2,000,000.00	2,000,000.00	-	1,000,000.00		XX	MPO	Head, Works
Rehabilitate 3 school blocks.	Zobzia Primary, Bongbini Primary, Sakogu R/C JHS		X			-	2,500,000.00	-	-		XX	MPO	Head, Works
Construct 1.no teachers accommodation at Sumniboma 1 and Dindani	Sumniboma 1, Dindani,				X	-	2,200,000.00	-	-		XX	MPO	Head, Works
Construct 3.no boreholes in 3 basic schools annually.	Nagboo EA/KG primary, Kolinvai M/A primary, Nagboo JHS, Gbandaa MA primary				X	-	-	-	75,000.00		XX	MPO	Head, Works

Projects	Location	Time Frame				Cost				Project Status		Implementing Institution/Department	
		Q1	Q2	Q3	Q4	GoG	DACF	IGF	Others (Specify)	New	Ongoing	Lead	Collaborating
Construct school toilets and urinals in Dindani EA Primary. Al-Salia EA Primary, Zobzia MA, Primary, Namenboku MA Primary School, Sakogu R/C JHS	Dindani EA Primary. Al-Salia EA Primary, Zobzia MA, Primary, Namenboku MA Primary School, Sakogu R/C JHS		X X			-	-	-	1,600,000.00		XX	MPO	Head, Works
Provide support for the construction of school blocks in wing schools initiated by the community.	Kualik, Wangai, Namenyala, Nayoko, Gbingbiriga		X X			-	800,000.00	-	-		XX	MCE	PO, Head, Works
Conduct regular monitoring and supervision in schools within the municipality	Nalerigu, Gambaga, Lanbginsi, Gbintiri & Sakogu.	X X	X X	X X	X X	80,000.00	-	-	-	X X		SISO officers	MDE, GES
Organise best teacher awards to	Gambaga			X		-	-	-	250,000	X X		MDE	MA, Partners

Projects	Location	Time Frame				Cost				Project Status		Implementing Institution/Department	
		Q1	Q2	Q3	Q4	GoG	DACF	IGF	Others (Specify)	New	Ongoing	Lead	Collaborating
motivate teachers				X					.00				
Organize community engagement sessions, either in-person or via radio, to promote education and encourage student enrollment and retention.	Nalerigu			X X		-	12,000.00	-	-	X X		MDE	MA, Partners
Provide teaching and learning materials for schools in the municipality.	Namasim, Sakogu, Tamboku, Kulgona, Kolivai, Namangu, Gbangu, Wundua, Samni, Nalerigu, Gambaga			xx		500,000.00	-	-	-	X X		GES	Partners
Extend the school feeding program to include schools currently not covered.	Bongbini, Gurugu, Nayiri Suasobigi		xx			-	-	5,000.00	-	X X		GES	Partners

Projects	Location	Time Frame				Cost				Project Status		Implementing Institution/Department	
		Q1	Q2	Q3	Q4	GoG	DACF	IGF	Others (Specify)	New	Ongoing	Lead	Collaborating
						2,580,000.00	7,512,000.00	5,000.00	2,925,000.00				
Programme Total									13,022,000.00				

Objective: To strengthen competency-based skill development in technical and vocational education

Programme: TVET education improvement Program

Projects	Location	Time Frame				Cost				Project Status		Implementing Institution/Department	
		Q1	Q2	Q3	Q4	GoG	DACF	IGF	Others (Specify)	New	Ongoing	Lead	Collaborating
Construct 1no. 3unit classroom block at Nalerigu.	Nalerigu				xx	-	1,100,000.00	-	-		XX	Principal	MA
Facilitate the recruitment of technical teachers to ensure all relevant subjects	Gambaga		xx			5,000.00	-	-	-		XX	Principal	GES

Projects	Location	Time Frame				Cost				Project Status		Implementing Institution/Department	
		Q1	Q2	Q3	Q4	GoG	DACF	IGF	Others (Specify)	New	Ongoing	Lead	Collaborating
are adequately covered.													
Construct 1N0. teachers accommodation at Nalerigu	Nalerigu		xx			-	900,000.00	-	-		XX	Principal	GES
Establish partnership with relevant private and public institutions for practical learning.	Gambaga				xx	-	-	-	25,000.00		XX	Principal	GES
						5,000.00	2,000,000.00	-	25,000.00				
Programme Total									2,030,000.00				
HEALTHCARE DELIVERY													
Objective: Promote universal access to better healthcare services.													

Projects	Location	Time Frame				Cost				Project Status		Implementing Institution/Department	
		Q1	Q2	Q3	Q4	GoG	DACF	IGF	Others (Specify)	New	Ongoing	Lead	Collaborating
Programme: Health infrastructure programme													
Projects	Location	Time Frame				Cost				Project Status		Implementing Institution/Department	
		Q1	Q2	Q3	Q4	GoG	DACF	IGF	Others (Specify)	New	Ongoing	Lead	Collaborating
Construct and furnish CHPS compounds to enhance primary healthcare delivery at Jablajo, Sumniboma, Bongbini	Jablajo, Sumniboma, Bongbini	X X	X X	X X	X X	-	3,600,000.00	-	-		XX	SOCO	MA, GHS
Rehabilitate CHPS Compound at Gbandaa, Tuni CHPS	Gbandaa, Tuni CHPS			X X	X X	-	1,420,000.00	5,000.00	-	X X		MA/NGOs	GHS
Provide fuel for transportation to support quarterly outreach	Gambaga MHMT	X X	X X	X X	X X	-	100,000.00	-	-		XX	MA/NGOs	GHS

Projects	Location	Time Frame				Cost				Project Status		Implementing Institution/Department	
		Q1	Q2	Q3	Q4	GoG	DACF	IGF	Others (Specify)	New	Ongoing	Lead	Collaborating
engagements.													
Construct a male and Female Wards at Gambaga polyclinic	Gambaga polyclinic	X X				-	1,500,000.00	-	-		XX	MP	GHS, MA
Construct two purpose-built structures to support the upgrade of CHPS Centres to fully functional Health Centres.	Jawani, Gbintiri	X X	X X	X X	X X	-	3,600,000.00	-	-		XX	MA/NGOs	GHS
Construct 1.n0 Boreholes for CHPS Compounds at Nagbai, Samni, Buzulungu, Namangu, Lumu Langbinsi, Kulgona, Dabari, Gaadantinga, Jerigitinga, Sumniboma,	Nagbai, Samni, Buzulungu, Namangu, Lumu Langbinsi, Kulgona, Dabari,		X X			-	350,000.00	-	-		XX	MA/NGOs	GHS

Projects	Location	Time Frame				Cost				Project Status		Implementing Institution/Department	
		Q1	Q2	Q3	Q4	GoG	DACF	IGF	Others (Specify)	New	Ongoing	Lead	Collaborating
Gaadantinga, Jerigitinga, Sumniboma,													
Construct a health centre to improve access to healthcare services at Nalerigu	Nalerigu			X X		-	1,000,000.00	-	-		XX	MP	GHS, MA
Organize regular outreach services to underserved areas.	Nalerigu, Gambaga, Lanbginsi, Gbintiri & Sakogu.	xx	xx	xx	xx	-	11,200.00	5,000.00	-	X X	Ongoing	GHS	MA/NGOs
Conduct education and sensitization programs on the importance of early reporting of mental health issues.	Nalerigu, Gambaga, Lanbginsi, Gbintiri & Sakogu.	xx	xx	xx	xx	-	5,000.00	-	-	X X		GHS	M/A

Projects	Location	Time Frame				Cost				Project Status		Implementing Institution/Department	
		Q1	Q2	Q3	Q4	GoG	DACF	IGF	Others (Specify)	New	Ongoing	Lead	Collaborating
Organize radio talk shows to promote preventive healthcare practices.	Nalerigu	xx	xx	xx	xx	-	6,000.00	-	-	X	X	GHS	EHSU
Advocate for and deploy additional community nurses to fully operationalize all CHPS zones	Gambaga	xx		xx		-	10,000.00	-	-	X	X	GHS (MHMT)	M/A
Objective: To improve mental health services at all levels													
Organize education campaigns and drug awareness clubs in schools	Nalerigu, Gambaga, Langbinsi, Gbintiri & Sakogu	X X	X X	X X	X X	-	5,000.00	-	-		X	GHS	M/A, GES
Hold community durbars on drug menace.	Nalerigu, Gambaga, Langbinsi, Gbintiri & Sakogu	X X	X X	X X	X X	-	6,000.00	-	-		X	GHS	M/A

Projects	Location	Time Frame				Cost				Project Status		Implementing Institution/Department	
		Q1	Q2	Q3	Q4	GoG	DACF	IGF	Others (Specify)	New	Ongoing	Lead	Collaborating
Conduct surprise inspections of drug outlets and community hotspots to ensure public safety and compliance	Nalerigu, Gambaga, Langbinsi, Gbintiri & Sakogu	X X	X X	X X	X X	-	-	-	-			POLICE	Drugs Taskforce
Establish peer support groups to promote health, encourage drug-free lifestyles, and empower youth to resist drug use.	Nalerigu, Gambaga, Langbinsi, Gbintiri & Sakogu	X X	X X	X X	X X	-	4,700.00	-	-	X		GHS	Drugs Taskforce
Set up emergency helplines at district hospital wards and centers.	Nalerigu, Gambaga, Langbinsi, Gbintiri & Sakogu	X X	X X	X X	X X	-	4,500.00	-	-	X		GHS	CHAG/MA

Projects	Location	Time Frame				Cost				Project Status		Implementing Institution/Department	
		Q1	Q2	Q3	Q4	GoG	DACF	IGF	Others (Specify)	New	Ongoing	Lead	Collaborating
Conduct screening for substance addiction and provide referrals for appropriate therapeutic support.	All Health centres, BMC and Gambaga Polyclinic	X X	X X	X X	X X	-	6,000.00	-	-	X		GHS	CHAG/MA
Provide cognitive therapy sessions for individuals affected by drug addiction.	BMC & Gambaga Polyclinic	X X	X X	X X	X X	-	2,000.00	-	-		XX	GHS	CHAG/MA
						-	11,630,400.00	10,000.00	-				
Programme Total									11,640,400.00				
WATER													
Objective:	Improve safe water coverage from 68% to 90% by 2029												
Programme:	Sustainable safe water supply programme												

Projects	Location	Time Frame				Cost				Project Status		Implementing Institution/Department	
		Q1	Q2	Q3	Q4	GoG	DACF	IGF	Others (Specify	New	Ongoing	Lead	Collaborating
Projects	Location	Time Frame				Cost				Project Status		Implementing Institution/Department	
		Q1	Q2	Q3	Q4	GoG	DACF	IGF	Others (Specify	New	Ongoing	Lead	Collaborating
Construct a Small Town Water System	Kolinvai	xx			xx	-	-	-	7,000,000.00		XX	Works Department	MPCU
Rehabilitate 80No. broken down boreholes	Yapala, Kasape, Zari, Tichirigitaba, Jablajo, Yankaziya, Burugu, Zarantinga, Kolinvai, Kulgona	xx			xx	-	80,000.00	-	-		XX	Works Department	MPCU
Construct at least 20 water Sources yearly.	Burugu, Zarantinga, Kolinvai, Kulgona, Yapala, Kasape, Zari, Tichirigitaba, Jablajo, Yankaziya.	xx			xx	-	900,000.00	-	-		XX	Works Department	MPCU
Train water management teams to operate and maintain newly constructed	Bontambari, Sumniboma No2, Dimia, Bumbuazio, Gbingbiriga, Tangbini, La-Tari, Jawani, Zandua,	xx			xx	-	30,000.00	-	-		XX	Works Department	MPCU

Projects	Location	Time Frame				Cost				Project Status		Implementing Institution/Department	
		Q1	Q2	Q3	Q4	GoG	DACF	IGF	Others (Specify)	New	Ongoing	Lead	Collaborating
water facilities.	Namenboku												
Construct mechanized boreholes and limited reticulated water supply systems.	Nalerigu, Nalerigu SHS, Gambaga	X X			X X	-	5,000,000.00	-	2,400,000.00		XX	SCP	MPCU
Train water management teams for every point source constructed	Burugu, Zarantinga, Kolinvai, Kulgona, Yapala, Kasape, Zari, Tichirigitaba, Jablajo, Yankaziya	X X			X X	-	30,000.00	-	-		XX	Works Department	MPCU
Select and Train Mechanics and systems maintenance teams in Sakogu, Nalerigu, Langbinsi	Sakogu, Nalerigu, Langbinsi,		X X			-	15,000.00	-	-		XX	Works Department	MPCU

Projects	Location	Time Frame				Cost				Project Status		Implementing Institution/Department	
		Q1	Q2	Q3	Q4	GoG	DACF	IGF	Others (Specify)	New	Ongoing	Lead	Collaborating
Procure 10 multi-parameter water quality testing kits.	Gambaga		X X			-	20,000.00	-	-		XX	MA	SCP
Procure 1No. Motorcycle to facilitate field work.	Nalerigu		X X			-	30,000.00	-	-		XX	MA	MA
Train monitoring team members on water safety and management practices.	Gambaga		X X			-	8,000.00	-	-		XX	MWST	EHSU
Mobilize and engage communities to safeguard and maintain water points..	Gbangu, Burugu, Zarantinga, Kolinvai, Kulgona, Bontambari, Sumniboma No2, Dimia, Bumbuazio			X X		-	-	5,000.00	-		XX	EHSU	MWST, ASSM. COMMUNITIES
						-	6,113,000.00	5,000.00	9,400,000.00				

Projects	Location	Time Frame				Cost				Project Status		Implementing Institution/Department	
		Q1	Q2	Q3	Q4	GoG	DACF	IGF	Others (Specify)	New	Ongoing	Lead	Collaborating
Programme Total									15,518,000.00				
SANITATION													
Objective: Improve access to improved and sustainable environmental sanitation services from 46% to 90% by Dec. 2029													
Programme: Environmental sanitation and hygiene improvement programme													
Projects	Location	Time Frame				Cost				Project Status		Implementing Institution/Department	
		Q1	Q2	Q3	Q4	GoG	DACF	IGF	Others (Specify)	New	Ongoing	Lead	Collaborating
Conduct sensitization campaigns in communities and institutions to promote handwashing with soap.	Nalerigu ,Gambaga, sakogu and langbinsi	X X	X X	X X	X X	-	70,000.00	30,000.00	50,000.00	X X		MEHO	SWCD, ISD
Enact and enforce bye-laws	Nalerigu ,Gambaga, sakogu and langbinsi			X X	X X	-	60,000.00	40,000.00	20,000.00	X X		MEHO.Pr osecutor	Zonal Cpuncil EHO

Projects	Location	Time Frame				Cost				Project Status		Implementing Institution/Department	
		Q1	Q2	Q3	Q4	GoG	DACF	IGF	Others (Specify)	New	Ongoing	Lead	Collaborating
													Staff, DPs
Develop and distribute IEC materials (flyers, stickers and leaflets)	Nalerigu ,Gambaga, sakogu and langbinsi	X X	X X			-	50,000. 00	30,000 .00	15,000. 00		XX	MEHO	SWCD, ISD, GHS
Organize capacity Training for 20 key stakeholders (sanitation agents, Community health workers, opinion leaders) to champion and sustain behaviour change.	Nalerigu ,Gambaga, sakogu , Gbintri and langbinsi		X X			-	60,000. 00	40,000 .00	-		XX	MEHO	Facilitator s/Consultant
Conduct sanitation enforcement and prosecution to ensure compliance with hygiene	Nalerigu ,Gambaga, sakogu , Gbintri and langbinsi	X X	X X	X X	X X	-	50,000. 00	20,000 .00	-		XX	MEHO,Prosecutors	District Court

Projects	Location	Time Frame				Cost				Project Status		Implementing Institution/Department	
		Q1	Q2	Q3	Q4	GoG	DACF	IGF	Others (Specify)	New	Ongoing	Lead	Collaborating
regulations.													
Acquire 5 communal containers yearly.	Gambaga, Nalerigu, Sakogu Langbinsi, and Gbintiri			X X		-	300,000.00	-	-		XX	Central Administration	ZL.Engineer
Institute door to door waste collection logistics	Gambaga & Nalerigu,	X X	X X	X X	X X	-	580,000.00	-	350,000.00	X X		MEHO	Sanitation service providers
Establish a revolving fund to assist households to construct toilets.	Nalerigu ,Gambaga, sakogu , Gbintri and langbinsi		X X			-	250,000.00	10,000.00	-		XX	MEHO	Artisans.DPs
Acquire and use try-cycles to collect and transport waste to intermediate sites.	Gambaga, Nalerigu, Langbinsi, Sakogu and Gbintiri		X X			-	750,000.00	-	-		XX	MEHO	SCP, MPO., ZL, DPs

Projects	Location	Time Frame				Cost				Project Status		Implementing Institution/Department	
		Q1	Q2	Q3	Q4	GoG	DACF	IGF	Others (Specify)	New	Ongoing	Lead	Collaborating
Construct 5No. solid waste transfer stations	Gambaga, Nalerigu, Langbinsi, Sakogu and Gbintiri		X X			-	900,000.00	-	-		XX	Central Administration	SCP
Procure a cesspit emptying machine to improve waste management services.	Gambaga			X X		-	1,000,000.00	-	-		XX	MPO, MEHO, MCD, MCE	SCP
Implement Community Led Total Sanitation in 10 communities every year	Nalerigu ,Gambaga, sakogu , Gbintri and langbinsi	X X	X X	X X	X X	-	500,000.00	20,000.00	300,000.00	X X		MEHO	SWCD, Communities, Ass. Person, Trad. Authorities
						-	4,570,000.00	190,000.00	735,000.00				
Programme Total									5,495,000.00				

Projects	Location	Time Frame				Cost				Project Status		Implementing Institution/Department	
		Q1	Q2	Q3	Q4	GoG	DACF	IGF	Others (Specify)	New	Ongoing	Lead	Collaborating
SOCIAL PROTECTION													
Objective:	Ensure effective child protection and family welfare system												
Programme:	Child Welfare and Social protection												
Projects	Location	Time Frame				Cost				Project Status		Implementing Institution/Department	
		Q1	Q2	Q3	Q4	GoG	DACF	IGF	Others (Specify)	New	Ongoing	Lead	Collaborating
Organize capacity training for social welfare officers to deliver outreach support for the vulnerable, PWDs, women and children.	Gambaga	X X	X X	X X		8,000.0 0	7,000.0 0	3,000. 00	-	X X		NORSAA C, UNICEF,	DSWCD
Implement child protection education and sensitization programs on child marriage, risky migration, abuse,	Gambaga, Nalerigu, Sakogu, Gbintiri and Langbinsi zones	xx	xx	xx	xx	16,000. 00	20,000. 00	-	30,000. 00	X X		DSWCD	UNICEF, NORSAA CK,Brave Aurora

Projects	Location	Time Frame				Cost				Project Status		Implementing Institution/Department	
		Q1	Q2	Q3	Q4	GoG	DACF	IGF	Others (Specify)	New	Ongoing	Lead	Collaborating
and trafficking using CP toolkits.													
Manage and report child protection cases promptly on SWIMS	Gambaga, Nalerigu, Sakogu, Gbintiri and Langbinsi zones	xx	xx	xx	xx	2,500.00	6,000.00	2,000.00	6,000.00	X X		DSWCD,	UNICEF. NORSAA C
Conduct Training for vulnerable out of school girls to acquire employable and income generating skills.	Sakogu, Langbinsi, Dagberiboari, Boku, Jawani, Laatari	X X	X X	X X	X X	10,000.00	15,000.00	3,000.00	3,000.00		XX	DSWCD,	UNICEF, BAC, GES.GHS
Facilitate the formation and training of 20 community-based livelihood groups, including Village Savings and Loan	Kolinvai, Nanori, Tichirigitaba, Yunyoora nyiri, Yaro yiri	X X	X X	X X		9,000.00	10,000.00	5,000.00	8,000.00	X X		DSWCD	BAC, Agric

Projects	Location	Time Frame				Cost				Project Status		Implementing Institution/Department	
		Q1	Q2	Q3	Q4	GoG	DACF	IGF	Others (Specify)	New	Ongoing	Lead	Collaborating
Associations (VSLAs).													
Conduct skills training and needs assessment for PWDs	Wundua,Dagberiboa ri, Jawani,Nagboo,Kulgona,Gambaga		xx	xx	xx	3,000.00	10,000.00	2,000.00	-	X	X	DSWCD	Municipal Assembly
Provide income generating packages to PWDs for economic empowerment	Gambaga,Nagboo, Gbangu, Kulgona,Kolinvai,	xx	xx	xx	xx	4,000.00	1,000,000.00	2,000.00	1,500.00	X	X	DSWCD	Budget, Finance
Conduct follow-up monitoring of LEAP beneficiaries to assess compliance with co-responsibilities.	Gambaga,Nagboo, Gbangu, Kulgona,Kolinvai,W undua,Chirifoyiri	X	X	X	X	3,000.00	12,000.00	1,500.00	-	X	X	DSWCD	DSWCD, Merchants

Projects	Location	Time Frame				Cost				Project Status		Implementing Institution/Department	
		Q1	Q2	Q3	Q4	GoG	DACF	IGF	Others (Specify)	New	Ongoing	Lead	Collaborating
Facilitate access to health insurance services for children under five and elderly beneficiaries.	Nalerigu, Sakogu, Gbintri, Langbenshi, Tamboku	X X	X X	X X	X X	3,500.0 0	5,000.0 0	2,000. 00	-	X X		DSWCD	NHIS
Rollout education to prevent SGBV, gender roles against children and women.	Gambaga, Nalerigu, Sakogu, Gbintiri and Langbinsi zones	X X	X X	X X	X X	6,000.0 0	40,000. 00	3,000. 00	35,000. 00		XX	DSWCD	DSWCD, DOVVSU, CHRAJ,
Organize social inclusion and reduce stigmatization through education and participation in community decision making.	Gambaga, Nalerigu, Sakogu, Gbintiri and Langbinsi zones	X X	X X	X X	X X	5,000.0 0	8,000.0 0	-	-		XX	DSWCD	SOCO, SEND GHANA, Youth Alive
Organize and fund Republic and Senior Citizens Day	Gambaga		X X			35,000. 00	-	-	-			SW	MCE, MCD

Projects	Location	Time Frame				Cost				Project Status		Implementing Institution/Department	
		Q1	Q2	Q3	Q4	GoG	DACF	IGF	Others (Specify)	New	Ongoing	Lead	Collaborating
celebrations.													
						105,000.00	1,133,000.00	23,500.00	83,500.00				
Programme Total									1,345,000.00				
GENDER AND UNPAID CAREWORK													
Objective: To Attain gender equality and equity in political and social development													
Programme: Promotion of women empowerment													
Projects	Location	Time Frame				Cost				Project Status		Implementing Institution/Department	
		Q1	Q2	Q3	Q4	GoG	DACF	IGF	Others (Specify)	New	Ongoing	Lead	Collaborating
Organize leadership and advocacy training for 100 women	Gambaga	X				-	-	-	40,000.00		XX	GDO	Vibrant Village Foundation.

Projects	Location	Time Frame				Cost				Project Status		Implementing Institution/Department	
		Q1	Q2	Q3	Q4	GoG	DACF	IGF	Others (Specify)	New	Ongoing	Lead	Collaborating
and young girls annually.													
Organize an educative training package on electoral laws, campaigning and how to navigate political systems.	Gambaga		X			-	-	-	35,000.00		XX	GDO	Vibrant Village Foundation.
Conduct 2 community fora and 2 radio talk shows to challenge gender stereotypes and promotion of women leadership.	Nalerigu, Langbinsi	X	X	X	X	-	-	2,500.00	25,000.00		XX	GDO	Vibrant Village Foundation.
Facilitate formation of 30 multi-functional women-led	Nalerigu ,Gambaga, sakogu , Gbintri and langbinsi		X		X	-	18,000.00	-	-		XX	GDO	BAC, SWCD, Dept. of Agric

Projects	Location	Time Frame				Cost				Project Status		Implementing Institution/Department	
		Q1	Q2	Q3	Q4	GoG	DACF	IGF	Others (Specify)	New	Ongoing	Lead	Collaborating
cooperatives or savings groups to enhance incomes.													
Train 500 women entrepreneurs and farmers with skills training, credit access, or start-up capital.	Gambaga, Nalerigu, Sakogu, Gbintiri and Langbinsi zones		X	X		-	-	-	40,000.00		XX	GDO	BAC
Organize 2 community stakeholders' engagements to challenge gender norms, promote women land rights and reduce resource discrimination.	Dindani, Samni,		X			-	15,500.00	-	-		XX	GDO	SWCD, Dept. of Agric
						-	33,500.00	2,500.00	140,000.00				

Projects	Location	Time Frame				Cost				Project Status		Implementing Institution/Department	
		Q1	Q2	Q3	Q4	GoG	DACF	IGF	Others (Specify)	New	Ongoing	Lead	Collaborating
Programme Total									176,000.00				
Objective: Promote awareness on recognition, reduction, redistribution and representation of unpaid care work in the municipality													
Programme: Unpaid Care Work Management.													
Projects	Location	Time Frame				Cost				Project Status		Implementing Institution/Department	
		Q1	Q2	Q3	Q4	GoG	DACF	IGF	Others (Specify)	New	Ongoing	Lead	Collaborating
Conduct education and sensitization on Unpaid Care Work through two community durbars and two radio discussions	Nalerigu,		X	X		-	-	-	12,000.00		XX	GDO	ALINEA
Develop and distribute IEC materials to disseminate	Tamale		X			-	-	-	25,000.00		XX	GDO	ALINEA

Projects	Location	Time Frame				Cost				Project Status		Implementing Institution/Department	
		Q1	Q2	Q3	Q4	GoG	DACF	IGF	Others (Specify)	New	Ongoing	Lead	Collaborating
information across the Municipality.													
Collect gender disaggregated data on Unpaid Care Work in the Municipality for advocacy and informed decision	Gambaga,Nalerigu, Langbensi,Sakogu, Gbintri		X			-	3,500.00	-	45,000.00		XX	GDO	ALINEA, OTHERS
Facilitate the provision efficient renewable energy options for heating and cooking.	Nanyiri, Took, Jablajo, Yaroyiri, Gbampaa,	X	X	X	X	-	-	-	500,000.00		XX	FSD, EPA	MPCU, Energy Commission, Other Partners
Construct early childhood care and development centres and train caregivers and volunteers.	Nalerigu, Langbinsi			X	X	-	2,200,000.00	-	1,300,000.00		XX	GDO	Canada Fund for Local Initiatives

Projects	Location	Time Frame				Cost				Project Status		Implementing Institution/Department	
		Q1	Q2	Q3	Q4	GoG	DACF	IGF	Others (Specify)	New	Ongoing	Lead	Collaborating
						-	2,203,500.00	-	1,882,000.00				
Programme Total									4,085,500.00				
ENVIRONMENT AND HUMAN SETTLEMENT DEVELOPMENT													
ROADS AND DRAINAGE													
Objective:	Improve accessibility and connectivity to 80% by 2029												
Programme:	Roads/Bridges/Drainage improvement programme												
Projects	Location	Time Frame				Cost				Project Status		Implementing Institution/Department	
		Q1	Q2	Q3	Q4	GoG	DACF	IGF	Others (Specify)	New	Ongoing	Lead	Collaborating
Use drip initiative to rehabilitation 10kms road in each ZC area.	Sakogu, Gbintiri Langbinsi, Gambaga, Nalerigu	X X	X X	X X	X X	50,000.00	1,000,000.00	-	-		XX	DRIP Coordinator	Head of works, mce, mcd

Projects	Location	Time Frame				Cost				Project Status		Implementing Institution/Department	
		Q1	Q2	Q3	Q4	GoG	DACF	IGF	Others (Specify)	New	Ongoing	Lead	Collaborating
Construct footbridges and culverts to create rural access at Gadantinga and Bumbuazio	Gadantinga, Bumbuazio,	X X	X X	X X	X X	-	900,000 .00	-	-		XX	DRIP Coordinator	Head of works, mce, mcd
Construct 1.2 Km Naa Salima Road at Nalerigu with streetlights, Road markings, Speed Ramps and a Box Culvert (UDG5)	Nalerigu - Naa Salma Road	X X	X X			10,818, 359.00	-	-	-	X X		GSCSP	MA
Engage communities to identify and select priority roads for rehabilitation.	Gambaga, Nalerigu, Sakogu, Gbentri, Langbensi	X X	X X	X X	X X	-	-	4,000. 00	-		XX	Assembly Members	MCE, MDPO
Construct an access road with a culvert leading to the Municipal Assembly office	Gambaga		X X			-	1,200,0 00.00	-	-		XX	PO	Head of Works, MCD

Projects	Location	Time Frame				Cost				Project Status		Implementing Institution/Department	
		Q1	Q2	Q3	Q4	GoG	DACF	IGF	Others (Specify)	New	Ongoing	Lead	Collaborating
Construct a paved area and carport in front of the Municipal Assembly office.	Gambaga		X X			-	350,000.00	-	-		XX	PO	Head of Works, MCD
Identify and deploy DRIP equipment to clear and open roads leading to the Municipality's tourist sites.	Gambaga and Nalerigu Areas.	X X	X X	X X	X X	-	500,000.00	-	-		XX	DRIP Coordinator	MCE, MCD, MDPO
Conduct educational programs on road safety awareness.	Nalerigu, Gambaga	X X	X X	X X	X X	40,000.00	-	-	-		XX	NRSC	MA
Install streetlights at strategic locations in the twin towns.	Gambaga - Nalerigu	X X				-	1,500,000.00	-	-	X X	XX	MA	WORKDS DEPT
Regulate the activities of	Langbensi, Gbentri, Gambaga, Nalerigu	X	X	X		32,000.	-	-	-	X X		NRSC	POLICE

Projects	Location	Time Frame				Cost				Project Status		Implementing Institution/Department	
		Q1	Q2	Q3	Q4	GoG	DACF	IGF	Others (Specify)	New	Ongoing	Lead	Collaborating
tricycles and unlicensed riders.		X	X	X		00							
Facilitate the renewal of road markings to improve traffic guidance and safety.	Langbensi , Gambaga, Nalerigu , Nagboo	X X		X X	X X	250,000 .00	-	-	-	X X		Head of Works/ Roads Dept	NRSC
Conduct continuous public education on proper waste disposal and the importance of keeping drains clean at Gambaga, Nalerigu, Langbinsi, Nagbo, Sakogu, Gbintiri	Gambaga, Nalerigu, Langbinsi, Nagbo, Sakogu, Gbintiri	X X	X X	X X	X X	20,000. 00	-	-	-	X X		EHSU	Urban Roads

Projects	Location	Time Frame				Cost				Project Status		Implementing Institution/Department	
		Q1	Q2	Q3	Q4	GoG	DACF	IGF	Others (Specify)	New	Ongoing	Lead	Collaborating
Conduct periodic drain desilting as part of National Sanitation Day activities at Gambaga, Nalerigu, Langbinsi, Nagbo, Sakogu, Gbintiri	Gambaga, Nalerigu, Langbinsi, Nagbo, Sakogu, Gbintiri	X X	X X	X X	X X	-	48,000.00	-	-		XX	EHSU	Urban Roads, MA
Conduct a comprehensive inventory of drains targeted for improvement at Nalerigu, Sakogu, Gambaga, Langbinsi	Nalerigu, Sakogu, Gambaga, Langbinsi	X X				5,000.00	-	-	-		XX	Urban Road	HOWs/ Roads Dept
Construct drainage systems in identified critical locations within the Municipality.	Nalerigu, Sakogu, Gambaga, Langbinsi	X X	X X	X X	X X	2,000,000.00	-	-	-		XX	Urban Road	HOWs/ Roads Dept

Projects	Location	Time Frame				Cost				Project Status		Implementing Institution/Department	
		Q1	Q2	Q3	Q4	GoG	DACF	IGF	Others (Specify)	New	Ongoing	Lead	Collaborating
Construct culverts and footbridges in areas with difficult access.	Sakogu, Langbinsi	X X	X X	X X	X X	-	1,060,000.00	-	-		XX	HOWs/ Roads Dept	MCD, MCE
						13,215,359.00	6,558,000.00	4,000.00	-				
Programme Total									19,777,359.00				
Objective: Ensure spatially integrated development													
Programme: SDF/SP/Local plans preparation													
Projects	Location	Time Frame				Cost				Project Status		Implementing Institution/Department	
		Q1	Q2	Q3	Q4	GoG	DACF	IGF	Others (Specify)	New	Ongoing	Lead	Collaborating
Train key staff on development of SDF, SPs, LPs,	Gambaga	X X				-	40,000.00	-	-		XX	PPD	LUSPA, Green City,

Projects	Location	Time Frame				Cost				Project Status		Implementing Institution/Department	
		Q1	Q2	Q3	Q4	GoG	DACF	IGF	Others (Specify)	New	Ongoing	Lead	Collaborating
Conduct community sensitization programs on building codes, regulations, and the importance of spatial planning.	Nalerigu, Gambaga, Langbinsi, Sakogu, Gbintiri, Nagboo,		X X			-	-	25,500.00	-	X X		PPD	TSC & SPC
Procure essential departmental equipment, including printers, A3 photocopiers, plotters, and toners.	Tamale		X X			-	35,000.00	-	-		XX	PPD	LUSPA
Organize coaching and mentoring sessions to enhance practical skills in drafting spatial plan reports and recording meeting	Gambaga		X X			-	-	20,000.00	-		XX	PPD	LUSPA, Green City,

Projects	Location	Time Frame				Cost				Project Status		Implementing Institution/Department	
		Q1	Q2	Q3	Q4	GoG	DACF	IGF	Others (Specify)	New	Ongoing	Lead	Collaborating
minutes.													
Prepare local plans for Nalerigu, Gambaga, Langbinsi, Sakogu, Gbintiri	Nalerigu, Gambaga, Langbinsi, Sakogu, Gbintiri		X X			-	240,000.00	-	-		XX	PPD	LUSPA
Formulate spatial Development Framework for the Municipality	Gambaga and Nalerigu	X X				-	140,000.00	-	-		XX	PPD	LUSPA, Green city
Collect spatial data for preparation of SDF	Nalerigu, Gambaga, Langbinsi, Sakogu,	X X				-	-	30,000.00	-		XX	PPD	LUSPA, Green city
Revised the Nalerigu greater Structural plan.	Nalerigu-Gambaga	X X	X X			-	80,000.00	-	-		XX	PPD	LUSPA, Green city

Projects	Location	Time Frame				Cost				Project Status		Implementing Institution/Department	
		Q1	Q2	Q3	Q4	GoG	DACF	IGF	Others (Specify)	New	Ongoing	Lead	Collaborating
Engage relevant stakeholders on the importance of orderly development and effective land use management.	Gambaga, Nalerigu, Langbensi, Sakogu, Gbentri, Nagboo, Gbangu,	X X				-	-	50,000.00	-		XX	PPD	TSC & SPC
Enforce planning laws and regulations to ensure compliance and proper implementation of development plans.	Nalerigu, Gambaga, Sakogu, Gbentri	X X	X X	X X	X X	-	-	35,000.00	-		XX	PPD	TSC & SPC
Conduct monitoring and evaluation of spatial planning activities to ensure compliance and effective	Gambaga, Nalerigu	X X	X X	X X	X X	-	-	20,000.00	-		XX	PPD	P&B Inspec.

Projects	Location	Time Frame				Cost				Project Status		Implementing Institution/Department	
		Q1	Q2	Q3	Q4	GoG	DACF	IGF	Others (Specify)	New	Ongoing	Lead	Collaborating
enforcement.													
Deploy DRIP equipment to clear and open all roads and access points identified in the Local Plans to facilitate smooth implementation.	Zimasa, Kulgona, Wundua, Saakogu, Dagberibon, Chirif, o yiri, Laatari, Zaari, Namori, Suasubigi, Naminboku, Lafram	X X	X X		X X	-	-	250,000.00	-		XX	PPD	UR, LUSPA
						-	535,000.00	430,500.00	-				
Programme Total									965,500.00				
Objective: To enhance institutional capacity and coordination for effective climate action.													
Programme: Climate change and disaster preparedness programme													

Projects	Location	Time Frame				Cost				Project Status		Implementing Institution/Department	
		Q1	Q2	Q3	Q4	GoG	DACF	IGF	Others (Specify)	New	Ongoing	Lead	Collaborating
Projects	Location	Time Frame				Cost				Project Status		Implementing Institution/Department	
		Q1	Q2	Q3	Q4	GoG	DACF	IGF	Others (Specify)	New	Ongoing	Lead	Collaborating
Conduct one simulation exercise yearly	GAMBAGA	X X				-	20,000.00	10,000.00	20,000.00			NADMO	Emma, Fire Service
Hold 4 radio discussions and announcement of critical information	NALERIGU	X X	X X	X X	X X	-	10,000.00	5,000.00	15,000.00	X X		NADMO	Emma, Ncce, Media, Etc
Document and validate indigenous early warning signs and ensure their effective dissemination to relevant stakeholders.	GAMBAGA	X X	X X	X X	X X	-	10,000.00	5,000.00	15,000.00	X X		NADMO	Ncce, Fire Service, Media, Communities Etc

Projects	Location	Time Frame				Cost				Project Status		Implementing Institution/Department	
		Q1	Q2	Q3	Q4	GoG	DACF	IGF	Others (Specify)	New	Ongoing	Lead	Collaborating
Formulate disaster preparedness action plans at community and District level.	GAMBAGA	X X	X X	X X	X X	-	40,000.00	10,000.00	30,000.00		XX	NADMO	Fire Service, Ncce, Communities, Ngos, Etc
Construct disaster-resilient housing units to serve as temporary shelters for affected populations.	Jimbale, Dindani, Tangigbeni, Bunbuazio	X X	X X		X X	-	50,000.00	20,000.00	100,000.00		XX	NADMO	Works Dept,, Social Welfare, Community Development Etc
Conduct risk assessment and hazard mapping in disaster prone locations.	GAMBAGA	X X	X X		X X	-	20,000.00	10,000.00	25,000.00		XX	NADMO	Communities, NGOS Etc
Conduct fire safety and firefighting training for staff and community	GAMBAGA	X X	X X		X X	-	20,000.00	5,000.00	20 000		XX	FIRE SERVICE	Nadmo, Emma, Communities Etc

Projects	Location	Time Frame				Cost				Project Status		Implementing Institution/Department	
		Q1	Q2	Q3	Q4	GoG	DACF	IGF	Others (Specify)	New	Ongoing	Lead	Collaborating
members.													
Conduct four (4) first aid and basic life support and evacuation trainings for community members.	GAMBAGA	X X	X X	X X	X X	-	10,000.00	5,000.00	15,000.00		XX	FIRE SERVICE	Nadmo, Ambulance Service, Etc
Train emergency response staff on search and rescue operations.	NALERIGU	X X	X X	X X	X X	-	30,000.00	15,000.00	40,000.00		XX	NADMO	Emma, Eta
Conduct four training sessions on crowd management for emergency response staff.	GAMBAGA	X X	X X	X X	X X	-	15,000.00	5,000.00	10,000.00		XX	GHANA POLICE SERVICE	Emma, NGOs, Etc
Provide emergency shelter logistics to	GAMBAGA	X X	X X	X X	X X	-	50,000.	30,000	70,000.		XX	NADMO	Police, Fire Service,

Projects	Location	Time Frame				Cost				Project Status		Implementing Institution/Department	
		Q1	Q2	Q3	Q4	GoG	DACF	IGF	Others (Specify)	New	Ongoing	Lead	Collaborating
support disaster victims.							00	.00	00				Emma
						-	275,000.00	120,000.00	340,000.00				
Programme Total									735,000.00				

ENERGY

Objective: Ensure total coverage (100%) by 2029

Programme: Electrification programme

Projects	Location	Time Frame				Cost				Project Status		Implementing Institution/Department	
		Q1	Q2	Q3	Q4	GoG	DACF	IGF	Others (Specify)	New	Ongoing	Lead	Collaborating
Procure 500 low-voltage (LV) poles to support electrification in communities not connected to the	Kanchina, Yankaziya, Dabari, Bongni, Lumu,		X X			-	1,500,000.00	-	-		XX	MPO	MCD

Projects	Location	Time Frame				Cost				Project Status		Implementing Institution/Department	
		Q1	Q2	Q3	Q4	GoG	DACF	IGF	Others (Specify)	New	Ongoing	Lead	Collaborating
national grid.													
Advocate and mobilize resources to secure electrical conductors and accessories for communities.	Kanchina, Yankaziya, Dabari, Bongni, Lumu,		X X			-	-	5,000.00	-		XX	MCE	NEDCO
Organize beneficiary communities to undertake communal labour for the installation of low-voltage (LV) poles.	Kanchina, Yankaziya, Dabari, Bongni, Lumu,		X X			-	-	5,000.00	-		XX	Assembly members	MCE
Conduct community awareness campaigns on the importance of	Kanchina, Yankaziya, Dabari, Bongni, Lumu,		X X			-	-	2,500.00	-		XX	Community Devt	Assembly members

Projects	Location	Time Frame				Cost				Project Status		Implementing Institution/Department	
		Q1	Q2	Q3	Q4	GoG	DACF	IGF	Others (Specify)	New	Ongoing	Lead	Collaborating
supporting rural electrification initiatives.													
Conduct 4 radio education and promotion on renewable energy options and the benefits to encourage usage.	Nalerigu	X X	X X	X X	X X	-	-	-	5,000.00		XX	MPCU	Alinea, Translight Solar Ltd, Others
Facilitate the development of market outlets for improved cookstoves to improve accessibility for consumers.	Gbandabila, Kulgona, Tuni, Jawani, Gbentri, Sakogu	X X	X X	X X	X X	-	-	3,000.00	-		XX	BAC	Traders
Facilitate the Setting up of affordable solar power market centres to support	Langbinsi, Gambaga & Nalerigu	X X	X X	X X	X X	-	-	3,000.00	-		XX	BAC	Translight Solar Ltd, Local Bzs

Projects	Location	Time Frame				Cost				Project Status		Implementing Institution/Department	
		Q1	Q2	Q3	Q4	GoG	DACF	IGF	Others (Specify)	New	Ongoing	Lead	Collaborating
easy patronage.													
Solicit assistance to procure and install solar power systems in underserved CHPS compounds and schools.	Yakaziya, Tuni, Jeregitinga, Jawani, Wundua, Gbangu, Sakogu, Nagboo,		X X			-	-	-	700,000.00		XX	MDPO, GES, GHS	Green People's Energy for Africa
						-	1,500,000.00	18,500.00	705,000.00				
Programme Total									2,223,500.00				
Objective: Protect existing forest reserves in the municipality													
Programme: Forest management and afforestation programme													
Projects	Location	Time Frame				Cost				Project Status		Implementing Institution/Department	

Projects	Location	Time Frame				Cost				Project Status		Implementing Institution/Department	
		Q1	Q2	Q3	Q4	GoG	DACF	IGF	Others (Specify)	New	Ongoing	Lead	Collaborating
		Q1	Q2	Q3	Q4	GoG	DACF	IGF	Others (Specify)	New	Ongoing	Lead	Collaborating
Promote annual integration of tree planting into crop production systems across the Municipality.	Namangu, Adaripe, Wundua, Namasim,			X X		10,000.00	-	-	-		XX	DDA	FSD
Create buffer zones along the stream to protect the vegetation.	Nagboo, Gbandabila, Sakogu, Langbensi		X X	X X		-	-	-	100,000.00		XX	FSD	DDA
Maintain and prevent bushfires invasion through organisation of education and sensitization sessions.	Namangu, Adaripe, Wundua, Namasim,		X X	X X		20,000.00	-	-	-		XX	FSD	NFS, DDA
						30,000.00	-	-	100,000.00				

Projects	Location	Time Frame				Cost				Project Status		Implementing Institution/Department	
		Q1	Q2	Q3	Q4	GoG	DACF	IGF	Others (Specify)	New	Ongoing	Lead	Collaborating
Programme Total									130,000.00				
GOVERNANCE AND INSTITUTIONAL DEVELOPMENT													
Objective:	To strengthen fiscal decentralisation.												
Programme:	Revenue mobilization and accountability.												
Projects	Location	Time Frame				Cost				Project Status		Implementing Institution/Department	
		Q1	Q2	Q3	Q4	GoG	DACF	IGF	Others (Specify)	New	Ongoing	Lead	Collaborating
Operationalize a dedicated standing revenue taskforce to conduct monthly revenue mop-up exercises.	Sakogu, Gbintiri, Langbinsi, Gambaga, Nalerigu and Nagbo.	X X	X X	X X	X X	-	-	36,000.00	-	X X		MBA	MFO & F&A Chairman
Establish revenue check points at key locations with police collaborative	Langbinsi, Nagboo, Sakogu, Gbintiri & Langbinsi.	X X				-	-	8,000.00	-		XX	MBA	MFO

Projects	Location	Time Frame				Cost				Project Status		Implementing Institution/Department	
		Q1	Q2	Q3	Q4	GoG	DACF	IGF	Others (Specify)	New	Ongoing	Lead	Collaborating
support.													
Organize 4 radio discussions on tax collection/payment education on property, basic and cattle rates.	Nalerigu	X X	X X	X X	X X	-	15,000.00	-	-		XX	MBA	MFO
Organize 4 tax and levy review meetings with key chiefs & Opinion leaders.	Gambaga	X X	X X	X X	X X	-	10,000.00	-	-		XX	MBA	MFO
Digitize revenue database for properties and businesses to lessen human intervention and pilfering.	Gambaga	X X				-	30,000.00	-	-		XX	MBA	MFO

Projects	Location	Time Frame				Cost				Project Status		Implementing Institution/Department	
		Q1	Q2	Q3	Q4	GoG	DACF	IGF	Others (Specify)	New	Ongoing	Lead	Collaborating
Automate billing system to share demand notices, tract collection and aid revenue analysis.	Gambaga	X X				-	-	12,000.00	-		XX	MBA	MFO
Hold a fee fixing forum.	Gambaga, Nalerigu, Sakogu, Gbentri, Langbensi			X X		-	30,000.00	-	-	X X		MBA	MFO
Public hearing of plans and budgets.	Gambaga, Zonal Council Capitals.			X X		-	30,000.00	-	-	X X		MBA	MPO
Rotate revenue collectors quarterly.	Gambaga, Langbinsi, Sakogu, Gbintiri & Nalerigu/ Nagbo.	X X	X X	X X		-	-	-	-		XX	MFO	MBA
Provide transparency boards and display tax performance monthly.	Gambaga, Nalerigu, Sakogu, Gbentri, Langbensi	X X	X X	X X	X X	-	-	7,500.00	-	X X		MFO	MBA

Projects	Location	Time Frame				Cost				Project Status		Implementing Institution/Department	
		Q1	Q2	Q3	Q4	GoG	DACF	IGF	Others (Specify)	New	Ongoing	Lead	Collaborating
Organise a meeting every year to set targets for all revenue collectors and zonal councils.	Gambaga				X X	-	-	-	4,000.00	X X		MBA	MFO
Engage the tax payers on the use of the revenue collected.	Gambaga, Nalerigu, Sakogu, Gbentri, Langbensi		X X		X X	-	20,000.00	-	-		XX	MBA	MFO
Label IGF projects in the municipality for visibility	Gambaga				X X	-	-	5,000.00	-	X X		MWE	MPO
Hold public hearing of plans and budgets.	Gambaga			X X		-	30,000.00	-	-	X X		MBA	MPO
Total						-	165,000.00	68,500.00	4,000.00				
Programme Total									237,500				

Projects	Location	Time Frame				Cost				Project Status		Implementing Institution/Department	
		Q1	Q2	Q3	Q4	GoG	DACF	IGF	Others (Specify)	New	Ongoing	Lead	Collaborating
									.00				
Objective:	To deepen political and administrative decentralization.												
Programme:	Local Government and Institutional Strengthening												
Projects	Location	Time Frame				Cost				Project Status		Implementing Institution/Department	
		Q1	Q2	Q3	Q4	GoG	DACF	IGF	Others (Specify)	New	Ongoing	Lead	Collaborating
Organize Mentorship and peer learning among staff.	Gambaga	X X	X X	X X	X X	-	-	3,500.00	-		XX	HR	MCD
Organize annual Performance Management Training	Gambaga	X X				-	25,000.00	-	-		XX	HR	MCD
Organize training on Team Building Activities	Gambaga		X X			-	6,000.00	-	-		XX	HR	MCD

Projects	Location	Time Frame				Cost				Project Status		Implementing Institution/Department	
		Q1	Q2	Q3	Q4	GoG	DACF	IGF	Others (Specify)	New	Ongoing	Lead	Collaborating
Procure a computer and Accessories, for the Records unit and 7 laptops(for Hr Dpet, Planning Unit, Procurement Unit, MIS)	Gambaga			X X		-	95,000.00	-	-		XX	PO	MCD
Procure Curtains, ACs, Routers for the MA Offices	Gambaga			X X		-	45,000.00	-	-		XX	PO	MCD
Procure 5 Motorbikes for Units & Depts (Water team 1, HR 1, Revenue Unit 2, Planning Unit 1)	Gambaga			X X		-	95,000.00	-	-		XX	PO	MCD
Organize computer Training to raise staff proficiency in computer basic	Gambaga		X X			-	15,000.00	-	-		XX	HR	MCD

Projects	Location	Time Frame				Cost				Project Status		Implementing Institution/Department	
		Q1	Q2	Q3	Q4	GoG	DACF	IGF	Others (Specify)	New	Ongoing	Lead	Collaborating
software (MS Word, Excel, Power point and Internet) to improved efficiency.													
Organise Training in PFM and public funds management issues for Departmental and Unit Heads.	Gambaga		X X			-	8,000.00	-	-		XX	HR	MCD
Facilitate the operationalization of Zonal Councils.	Gambaga, Nalerigu, Langbinsi			X X		-	150,000.00	-	-		XX	HR	MCD
Procure and install 120kw Power Generator and Accessories for the MA offices	Gambaga		X X			-	200,000.00	-	-		XX	PO	MCD

Projects	Location	Time Frame				Cost				Project Status		Implementing Institution/Department	
		Q1	Q2	Q3	Q4	GoG	DACF	IGF	Others (Specify)	New	Ongoing	Lead	Collaborating
Hold town hall meetings in central locations and use radio to encourage patronage.	Gambaga/Nalerigu			X X		-	48,000.00	-	-	X X		MPO	MCD/MB A
Organize public sensitisations on radio on radical citizens roles and responsibilities in local governance.	Nalerigu		X X		X X	-	24,000.00	-	15,000.00		XX	MCE/MC D	MPO/NC CE
Organize PM&E for community interventions	Gambaga	X X	X X	X X	X X	-	32,000.00	-	-		XX	MPO	SW//CD officer
Construct police post and Accommodation at Sakogu and Jawani.	Sakogu and Jawani	X X				-	85,000.00	-	-		XX	MCD	Police Commander
						-	828,000	3,500.	15,000.				

Projects	Location	Time Frame				Cost				Project Status		Implementing Institution/Department	
		Q1	Q2	Q3	Q4	GoG	DACF	IGF	Others (Specify)	New	Ongoing	Lead	Collaborating
							.00	00	00				
Programme Total									846,500.00				
Objective: Improve M&E capacity of stakeholders to enhance knowledge management.													
Programme: Monitoring and evaluation (M&E)													
Projects	Location	Time Frame				Cost				Project Status		Implementing Institution/Department	
		Q1	Q2	Q3	Q4	GoG	DACF	IGF	Others (Specify)	New	Ongoing	Lead	Collaborating
Hold 4 quarterly MPCU Meetings	Gambaga	X X	X X	X X	X X	-	-	6,000.00	-	X X		MDPO	MPCU
Conduct 4 Quarterly field Monitoring visits	Nalerigu, Sakogu, Lagbensi, Gbentri, Gambaga	X X	X X	X X	X X	-	32,000.00	-	-	X X		MDPO	MPCU
Compile 4 quarterly M&E reports and submit to RCC &	Gambaga	X X	X X	X X	X X	-	-	4,000.00	-	X X		MDPO	MPCU

Projects	Location	Time Frame				Cost				Project Status		Implementing Institution/Department	
		Q1	Q2	Q3	Q4	GoG	DACF	IGF	Others (Specify)	New	Ongoing	Lead	Collaborating
NDPC.													
Compile 4 quarterly learning event reports	Gambaga	X X	X X	X X	X X	-	-	24,000.00	-	X X		MDPO	MPCU
Undertake viability and feasibility studies for proposed project interventions prior to implementation.	Nalerigu ,Gambaga, sakogu , Gbintri and langbinsi	X X	X X	X X	X X	-	40,000.00	-	-	X X		MDPO	MPCU
Carry out 4 effective Monitoring and reporting on donor and GoG Funded Projects.	Langbenssi, Sakogu	X X	X X	X X	X X	-	8,000.00	-	-	X X		MDPO	MPCU
Undertake 4 Quarterly Budget committee	Gambaga	X X	X X	X X	X X	-	48,000.00	-	-	X X		MBA	Budget Com. Memebrs

Projects	Location	Time Frame				Cost				Project Status		Implementing Institution/Department	
		Q1	Q2	Q3	Q4	GoG	DACF	IGF	Others (Specify)	New	Ongoing	Lead	Collaborating
meetings													
Organize two capacity-building sessions on effective budget preparation and management of the budget cycle.	Langbensi, Sakogu, Nalerigu, Gbentri		X X	X X		-	65,000.00	-	-	X X		MBA	Budget Com. Memebrs, tax payers
						-	193,000.00	34,000.00	-				
Programme Total									227,000.00				
Objective: Enhancing decision-making and problem-solving skills for staff													
Programme: Knowledge management and learning													
Projects	Location	Time Frame				Cost				Project Status		Implementing Institution/Department	
		Q1	Q2	Q3	Q4	GoG	DACF	IGF	Others	New	Ong	Lead	Collaborat

Projects	Location	Time Frame				Cost				Project Status		Implementing Institution/Department	
		Q1	Q2	Q3	Q4	GoG	DACF	IGF	Others (Specify)	New	Ongoing	Lead	Collaborating
									(Specify)	w	oing		ing
Develop and publish four quarterly and one annual knowledge briefs derived from sectoral reports.	Gambaga	X X	X X	X X	X X	-	1,500.00	-	-		XX	Planning Unit	MPCU
Establish a digital and physical knowledge repository at the Municipal Planning Unit and Digitize M&E and project data for easy retrieval and use.	Gambaga			X X		-	25,000.00	-	-		XX	Planning Unit	MPCU
Enhancing data management and spatial planning through updated municipal database and GIS	Gambaga	X X	X X	X X	X X	-	8,000.00	-	-		XX	Planning Unit	MPCU

Projects	Location	Time Frame				Cost				Project Status		Implementing Institution/Department	
		Q1	Q2	Q3	Q4	GoG	DACF	IGF	Others (Specify)	New	Ongoing	Lead	Collaborating
systems.													
Publish newsletters/Bulletins, policy briefs, and success stories.	Gambaga	X X	X X	X X	X X	-	15,000.00	-	-		XX	Planning Unit	MPCU
Organise quarterly peer learning sessions and visits between communities and departments.	Gambaga	X X	X X	X X	X X	-	20,000.00	-	-		XX	Planning Unit	MPCU
Conduct training for staff on KM tools, M&E, and adaptive management.	Gambaga		X X			-	30,000.00	-	-		XX	Planning Unit	MPCU

Projects	Location	Time Frame				Cost				Project Status		Implementing Institution/Department	
		Q1	Q2	Q3	Q4	GoG	DACF	IGF	Others (Specify)	New	Ongoing	Lead	Collaborating
Conduct feedback meetings for citizens, CSOs, and beneficiaries and Integrate findings from M&E and participatory reviews into annual performance assessments.	Gambaga, Nalerigu, Sakogu, Gbentri, Langbensi	X X	X X	X X	X X	-	20,000.00	-	-		XX	Planning Unit	MPCU, CSOs, Citizens
SUBTOTAL						-	119,500.00	-	-				
Programme Total									119,500.00				
Objective:	Promote good governance												
Programme:	Management and administration												
Projects	Location	Time Frame				Cost				Project Status		Implementing Institution/Department	

Projects	Location	Time Frame				Cost				Project Status		Implementing Institution/Department	
		Q1	Q2	Q3	Q4	GoG	DACF	IGF	Others (Specify)	New	Ongoing	Lead	Collaborating
		Q1	Q2	Q3	Q4	GoG	DACF	IGF	Others (Specify)	New	Ongoing	Lead	Collaborating
Create MA Asset Register and update it quarterly.	Gambaga	X X	X X	X X	X X	-	-	1,000.00	-		XX	Head of Works	MPCU
Conduct quarterly inspections for roofing, plumbing, electrical systems and general condition of all public buildings	Gambaga	X X	X X	X X	X X	-	-	1,200.00	-		XX	Head of Works	MPCU
Conduct biennial exterior maintenance, including crack repairs and repainting.	Gambaga				X X	-	30,000.00	-	-		XX	Head of Works	MPCU
Install basic solar backups in CHPS for	Gambaga, Nalerigu, Sakogu, Gbentri, Langbensi				X X	-	50,000.00	-	-		XX	Head of Works	MPCU

Projects	Location	Time Frame				Cost				Project Status		Implementing Institution/Department	
		Q1	Q2	Q3	Q4	GoG	DACF	IGF	Others (Specify)	New	Ongoing	Lead	Collaborating
power reliability.													
Carry out annual maintenance and repairs of roofs and floors public buildings	Gambaga, Langbinsi & Nalerigu				X X	-	250,000.00	-	-		XX	Head of Works	MPCU
Conduct quarterly repair and treatment of termite-infested windows and doors.	Gambaga, Langbinsi & Nalerigu	X X	X X	X X	X X	-	150,000.00	-	-		XX	Head of Works	MPCU
Schedule bi-annual servicing for computers, printers, and furniture.	Gambaga		X X		X X	-	-	-	12,000.00		XX	Head of Works	MPCU
Replace obsolete items identified through inventory audits.	Gambaga			X X		-	125,000.00	-	-		XX	Head of Works	MPCU

Projects	Location	Time Frame				Cost				Project Status		Implementing Institution/Department	
		Q1	Q2	Q3	Q4	GoG	DACF	IGF	Others (Specify)	New	Ongoing	Lead	Collaborating
Conduct routine monthly maintenance of vehicles, including oil changes and tire inspections.	Gambaga	X X	X X	X X	X X	-	34,000.00	-	-		XX	Head of Works	MPCU
Conduct full servicing quarterly, including brakes and engines for the Municipal vehicles.	Gambaga	X X	X X	X X	X X	-	24,000.00	-	-		XX	Head of Works	MPCU
Programme Total						-	663,000.00	2,200.00	12,000.00				
									677,200.00				